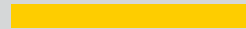




**LIGHT^{MY}
BRICKS**



**LEGO® CAMP NOU
FC BARCELONA
#10284 LIGHT KIT
INSTALLATION GUIDE**

Light My Bricks



LEGO® CAMP NOU - FC BARCELONA #10284 LIGHT KIT INSTALLATION GUIDE

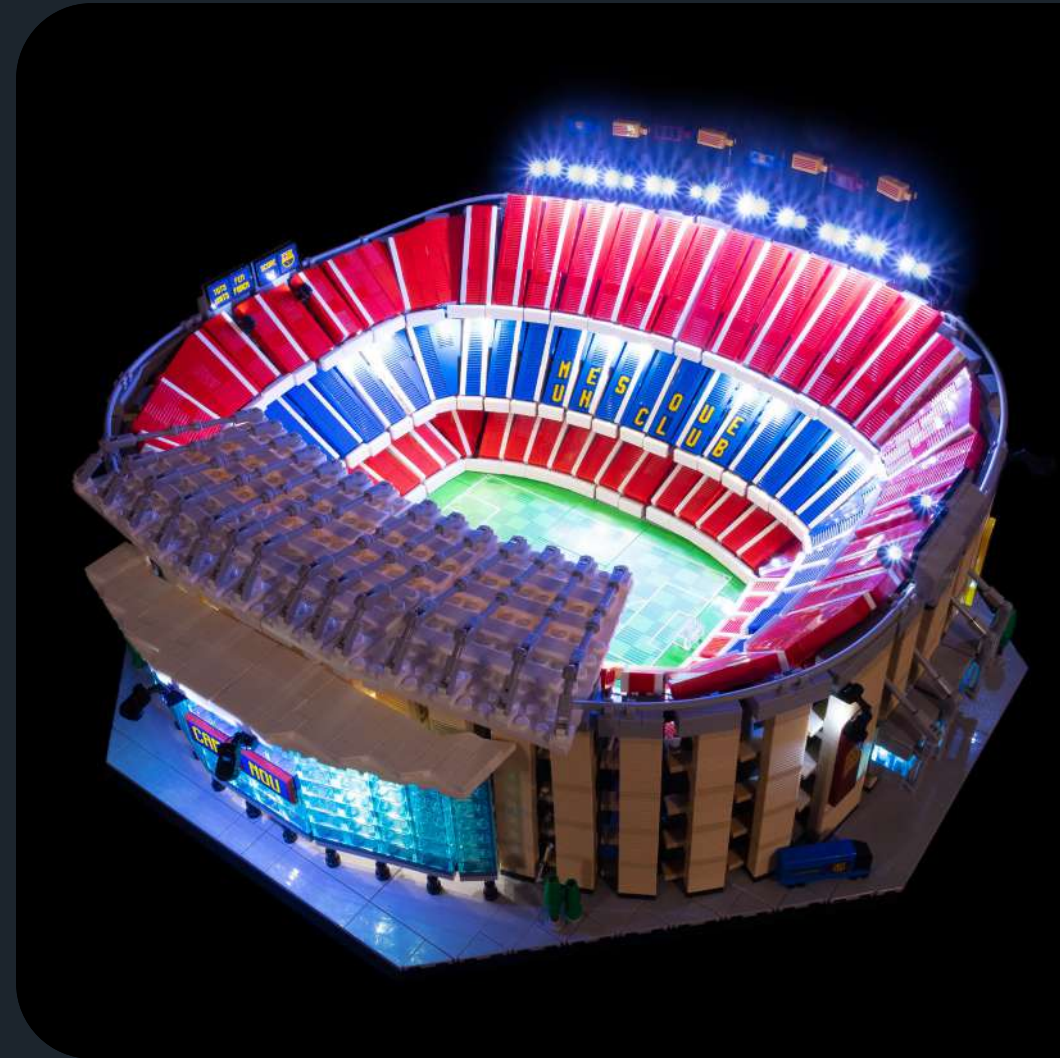
Hi There!

We're here to help you get started on the LEGO®
Camp Nou - FC Barcelona (10284) Light Kit.

This PDF details the instructions for the LED light kit only. If
you are wishing to purchase this product, please click [here](#)
to view the product page.

If you run into any issues, please refer to the troubleshoot-
ing section towards the end of this guide.

Have fun and enjoy!



PACKAGE CONTENTS:



23x Cool White 30cm Large Bit Light*
13x Cool White 30cm Bit Light*
12x White Strip Light



3 x 2-Port Expansion Board
3 x 6-Port Expansion Board
2 x 8-Port Expansion Board
3 x 12-Port Expansion Board*



8 x 5cm Connecting Cable
9 x 15cm Connecting Cable*
6 x 30cm Connecting Cable



1 x USB Power Cable
(Power Source not Included)

LEGO PIECES:



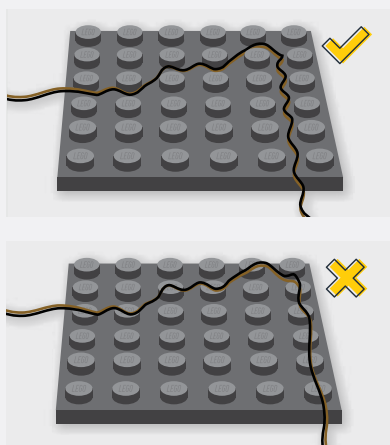
- 31 x Round Plate 1x1 Open Stud – Black*
- 10 x Arm Skeleton, Bent with Clips (Horizontal Grip) – Black
- 21 x Plate 1x1 Mod Rounded w Handle – Black*

* Indicates 1 extra component has been included just in case!

Contents

Before You Begin	5
Instructions	9
Final Product	51
Troubleshooting	52
Contact	57

Before You Begin



Laying cables in between and underneath bricks

Cables can fit in between and underneath LEGO® bricks, plates, and tiles providing they are laid correctly between the LEGO® studs. Do NOT forcefully join LEGO® together around cables; instead ensure they are laying comfortably in between each stud.

CAUTION: Forcing LEGO® to connect over a cable can result in damaging the cable and light.

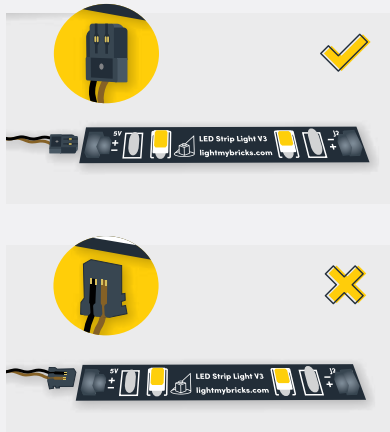


Connecting Cable Connectors To Expansion Boards

Take extra care when inserting connectors to ports of Expansion Boards. Connectors can be inserted only one way. With the expansion board facing up, look for the soldered “=” symbol on the left side of the port. The connector side with the wires exposed should be facing toward the soldered “=” symbol as you insert into the port. If a plug won’t fit easily into a port connector, do not force it.

Incorrectly inserting the connector can result in bent pins inside the port or possible overheating of the expansion board when connected.

Before You Begin



Connecting Cable Connectors To Strip Lights

Take extra care when inserting connectors to ports on the Strip Lights. Connectors can be inserted only one way. With the Strip Light facing up, ensure the side of the connector with the wires exposed is facing down. If a plug won't fit easily into a port connector, don't force it. Doing so will damage the plug and the connector.



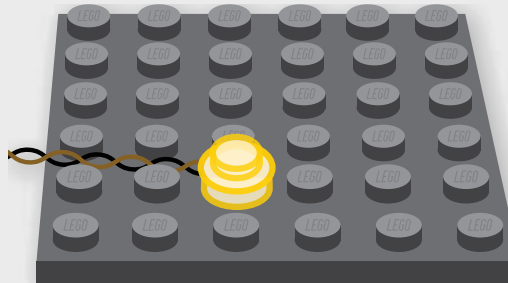
Connecting Micro Cable Connectors To Micro Expansion Board Ports

Take extra care when inserting the micro connectors to micro ports of Micro Expansion Boards. Connecting Micro Bit Lights to Micro Expansion Boards is similar to connecting lights and cables to Strip Lights. With the expansion board facing up, ensure the side of the connector with the wires exposed is facing down. If a plug won't fit easily into a port connector, do not force it. Use your fingernail to push the plastic part of the connector to the micro port.

Before You Begin

Installing Bit Lights Under Lego® Bricks And Plates

When installing Bit Lights under LEGO® pieces, ensure they are placed the correct way up (Yellow LED component exposed). You can either place them directly on top of LEGO® studs or in between.





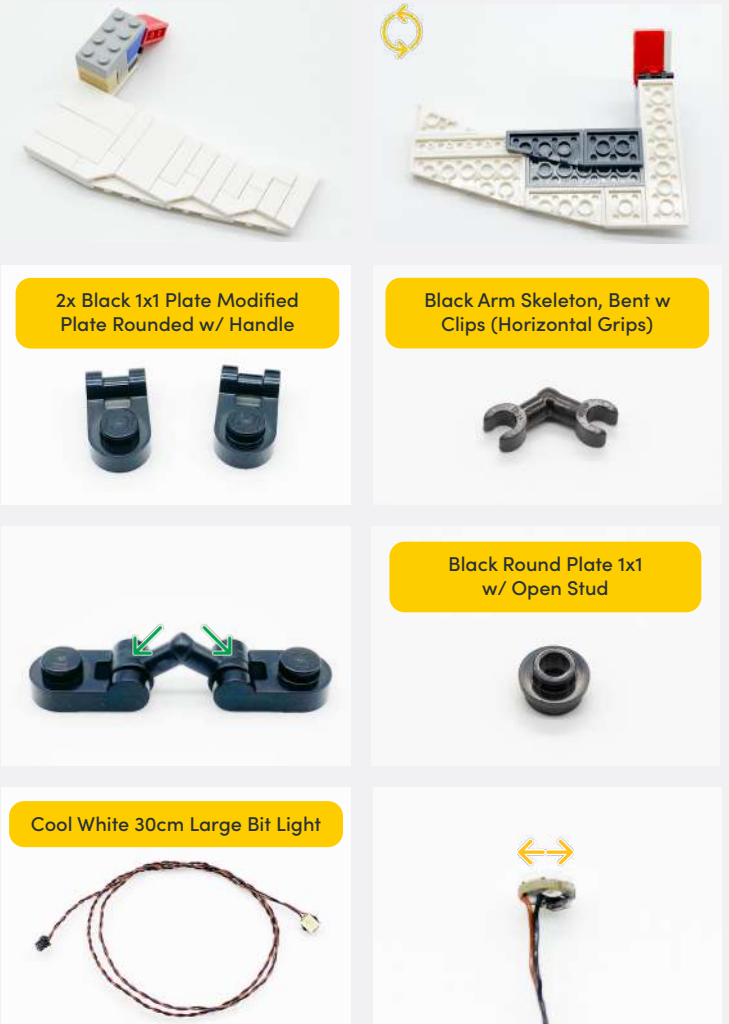
INSTRUCTIONS

To ensure a smooth installation of your light kit, please read and follow each step carefully. If you run into any issues, please refer to the online troubleshooting guide.

1

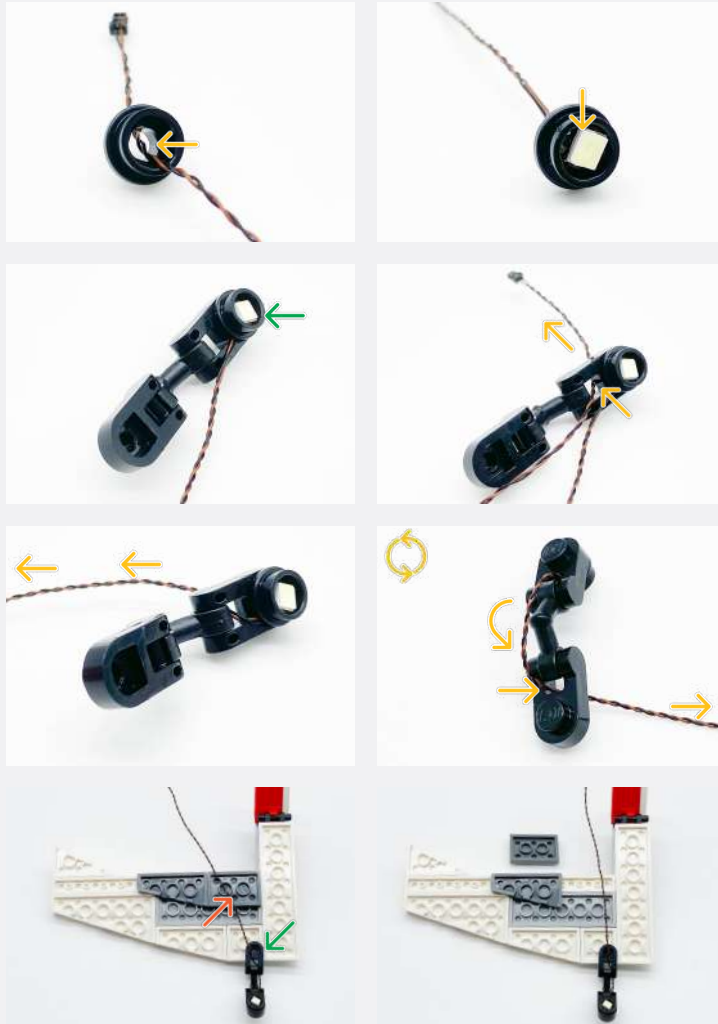


2

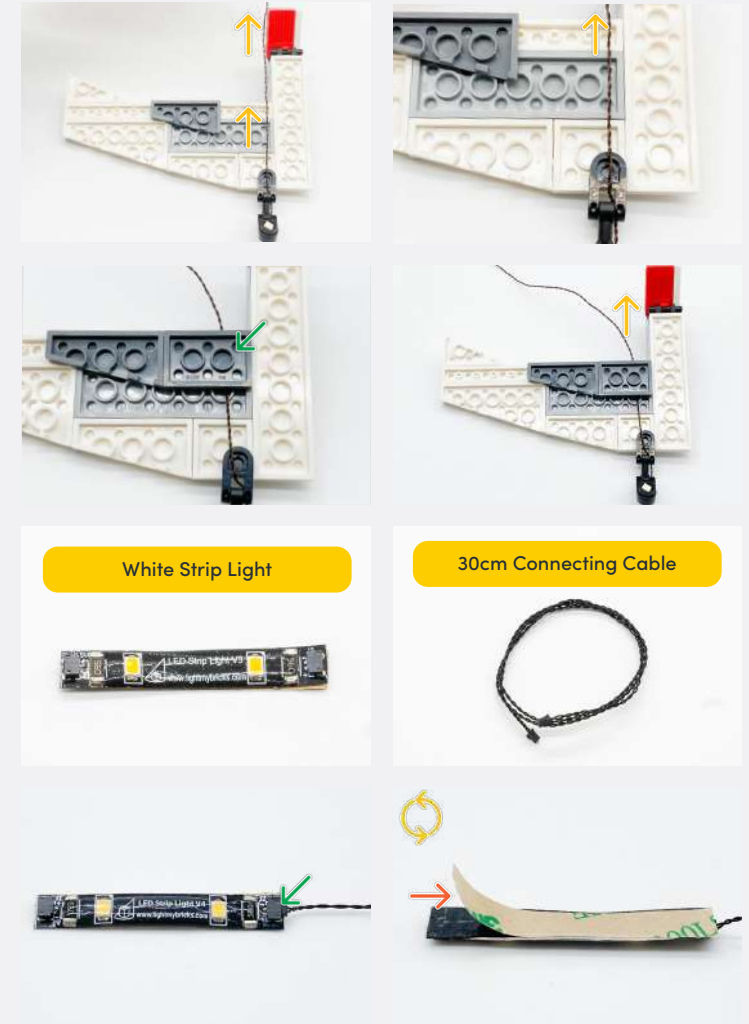


Legend

→ DISCONNECT → CONNECT / RECONNECT ↻ TURN / FLIP → DIRECTIONAL ↺ TWIST / BRAID ✨ POWER ON TEST 📝 NOTE ICON



3



White Strip Light

30cm Connecting Cable

Legend

→ DISCONNECT

→ CONNECT / RECONNECT

↻ TURN / FLIP

→ DIRECTIONAL

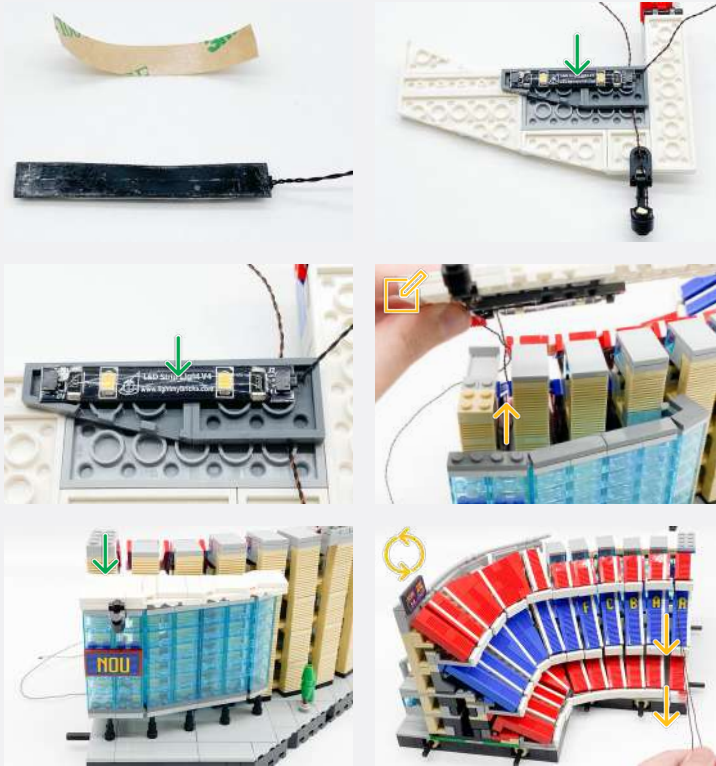
↻ TWIST / BRAID

✱ POWER ON TEST

📝 NOTE ICON

4

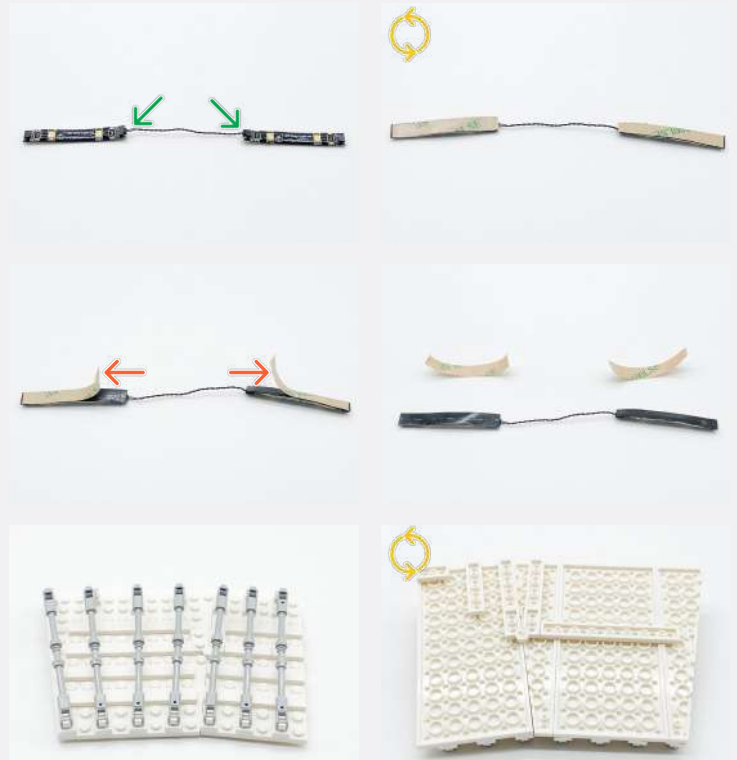
✏ Thread the cables through the gap towards the inside of the stadium



2x White Strip Light



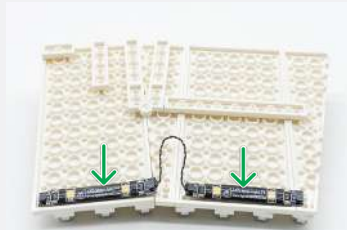
5cm Connecting Cable



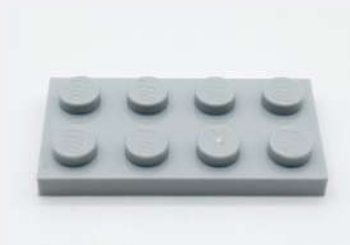
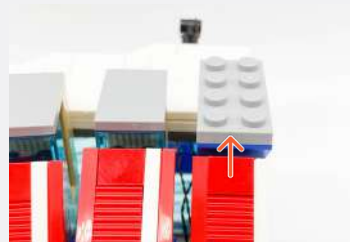
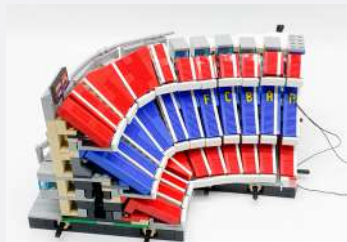
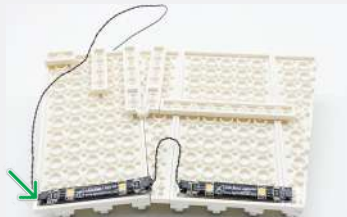
Legend

→ DISCONNECT → CONNECT / RECONNECT ↺ TURN / FLIP → DIRECTIONAL ↻ TWIST / BRAID ✨ POWER ON TEST ✏ NOTE ICON

5



30cm Connecting Cable



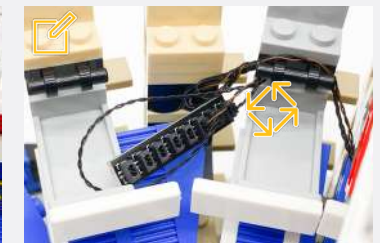
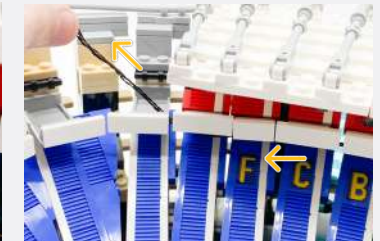
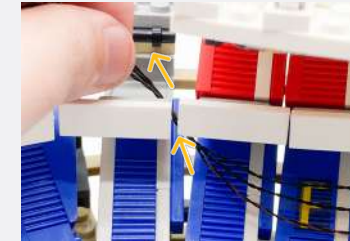
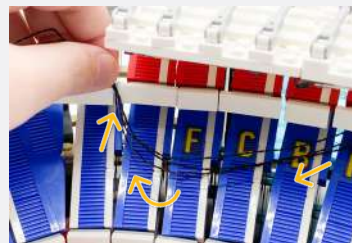
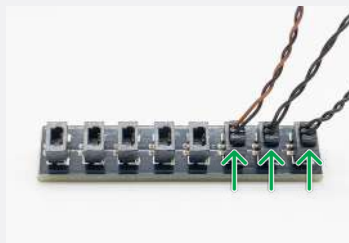
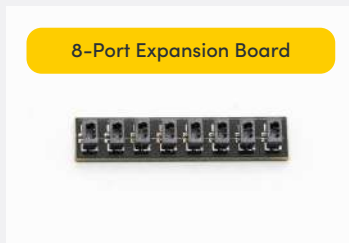
Legend

 DISCONNECT
  CONNECT / RECONNECT
  TURN / FLIP
  DIRECTIONAL
  TWIST / BRAID
  POWER ON TEST
  NOTE ICON

6



8-Port Expansion Board



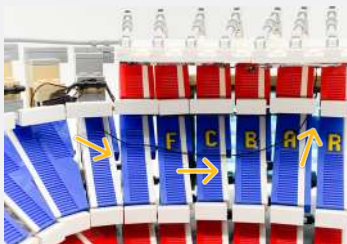
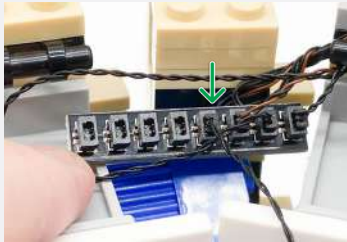
Ensure the cables are pulled tight before twisting them together to prevent them from dangling

Legend

→ DISCONNECT → CONNECT / RECONNECT ↺ TURN / FLIP → DIRECTIONAL ↻ TWIST / BRAID ✨ POWER ON TEST 📝 NOTE ICON

7

30cm Connecting Cable



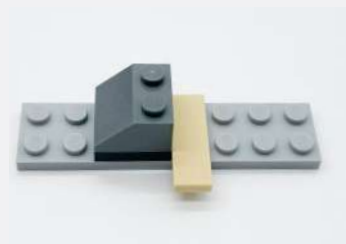
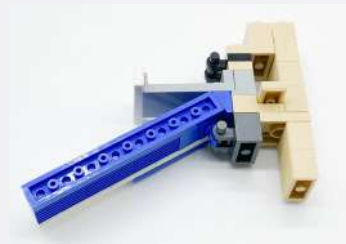
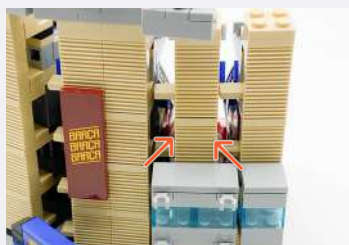
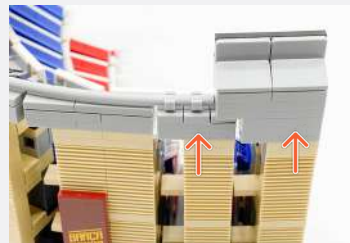
2-Port Expansion Board



Legend

- DISCONNECT
- CONNECT / RECONNECT
- ↻ TURN / FLIP
- DIRECTIONAL
- ↻ TWIST / BRAID
- ⚡ POWER ON TEST
- 📝 NOTE ICON

8

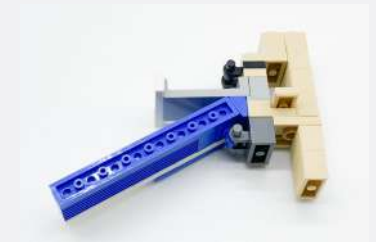
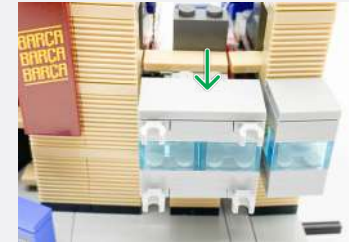
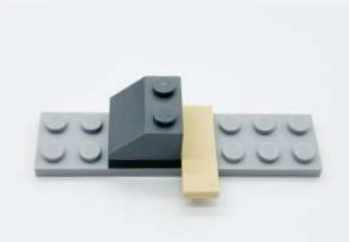
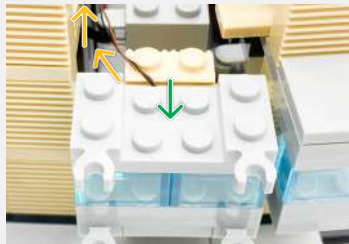


Legend

 DISCONNECT
  CONNECT / RECONNECT
  TURN / FLIP
  DIRECTIONAL
  TWIST / BRAID
  POWER ON TEST
  NOTE ICON



Cool White 30cm Bit Light



9

2x Black 1x1 Plate Modified
Plate Rounded w/ Handle



Black Arm Skeleton, Bent w Clips (Horizontal Grips)



Black Round Plate 1x1
w/ Open Stud



Legend



→ DISCONNECT

CONNECT /
RECONNECT

TURN / FLIP



DIRECTIONAL



TWIST / BRAID



- POWER ON TEST



 NOTE ICON



Connect both Cool White 30cm Bit Lights from Step 8 & 9 to the Expansion Board



Legend

 DISCONNECT
  CONNECT / RECONNECT
  TURN / FLIP
  DIRECTIONAL
  TWIST / BRAID
  POWER ON TEST
  NOTE ICON

10



2x Black 1x1 Plate Modified Plate Rounded w/ Handle



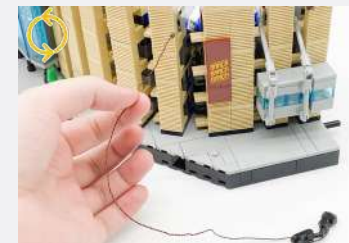
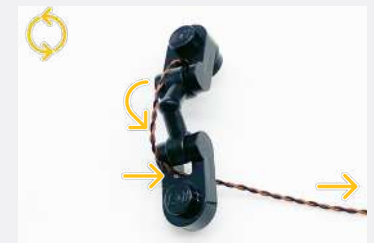
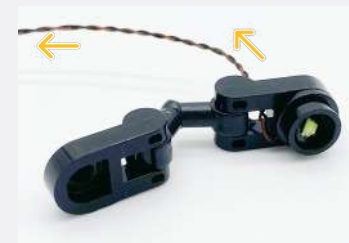
Black Arm Skeleton, Bent w/ Clips (Horizontal Grips)



Black Round Plate 1x1 w/ Open Stud



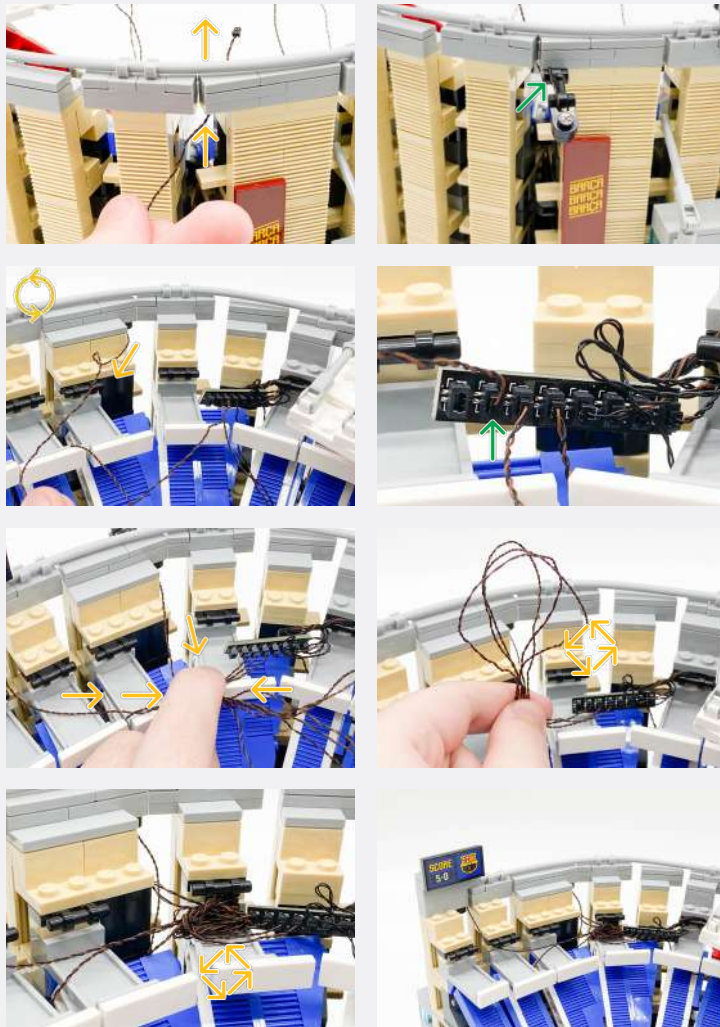
Cool White 30cm Bit Light



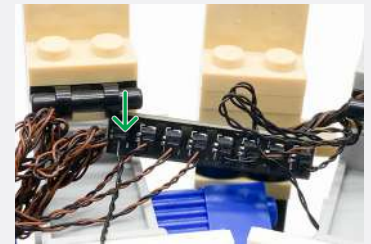
Legend

→ DISCONNECT → CONNECT / RECONNECT ↺ TURN / FLIP → DIRECTIONAL ↻ TWIST / BRAID ✨ POWER ON TEST 📝 NOTE ICON

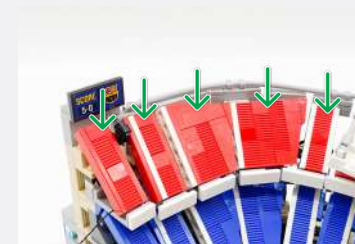
11



15cm Connecting Cable



2-Port Expansion Board



Legend

-  DISCONNECT
-  CONNECT / RECONNECT
-  TURN / FLIP
-  DIRECTIONAL
-  TWIST / BRAID
-  POWER ON TEST
-  NOTE ICON

12

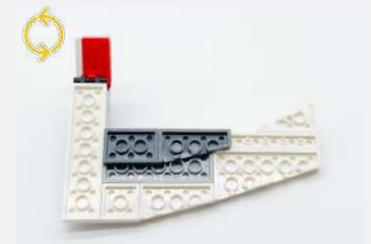
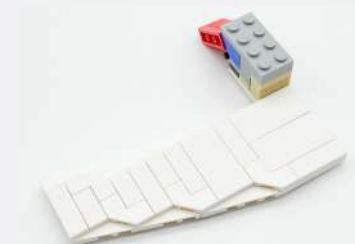
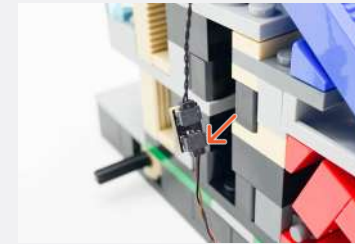
USB Power Cable



Connect to a USB, Power Bank, USB to AA Battery Pack or USB Wall Adaptor (each sold separately)



13



Legend

DISCONNECT
 CONNECT / RECONNECT
 TURN / FLIP
 DIRECTIONAL
 TWIST / BRAID
 POWER ON TEST
 NOTE ICON

14

2x Black 1x1 Plate Modified
Plate Rounded w/ Handle



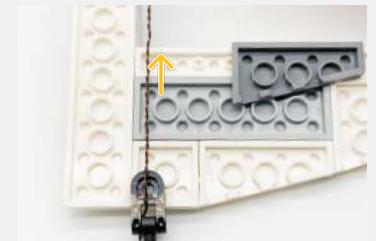
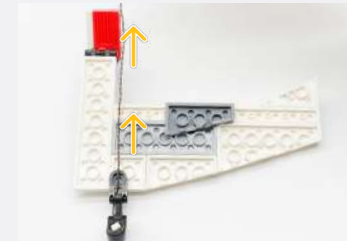
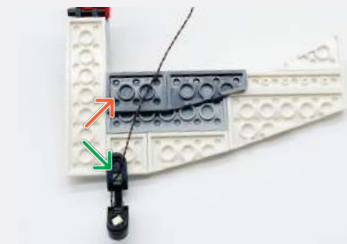
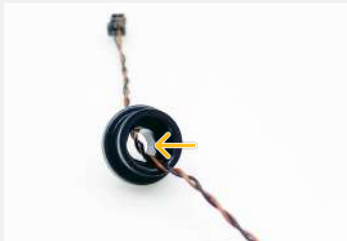
Black Arm Skeleton, Bent w
Clips (Horizontal Grips)



Black Round Plate 1x1
w/ Open Stud



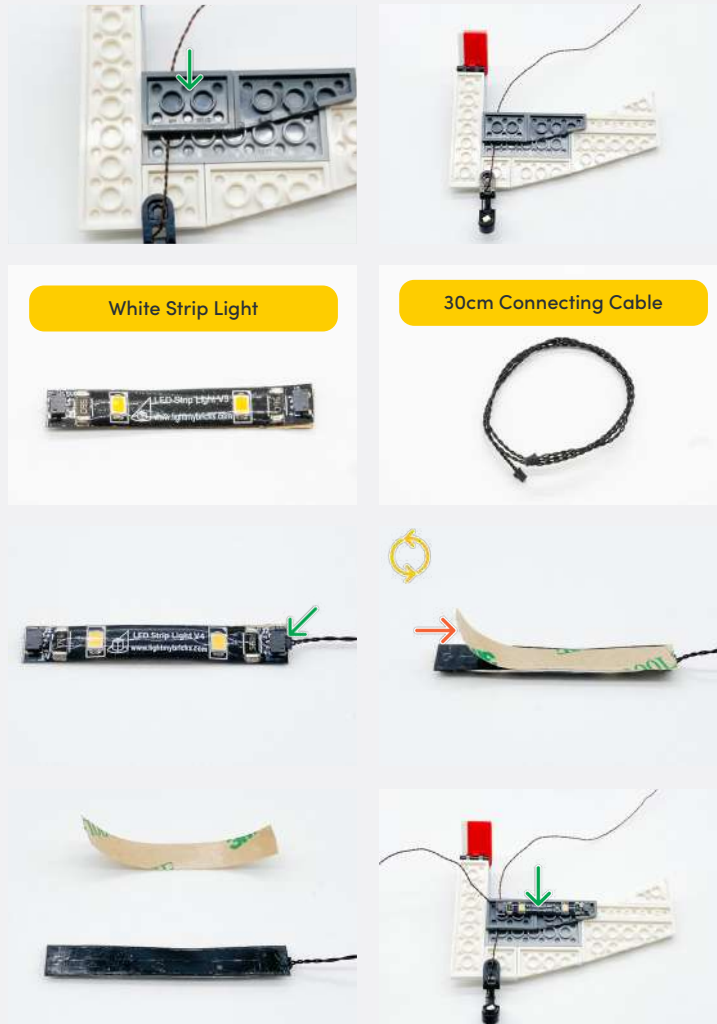
Cool White 30cm Large Bit Light



Legend

→ DISCONNECT → CONNECT / RECONNECT ↺ TURN / FLIP → DIRECTIONAL ↻ TWIST / BRAID ✨ POWER ON TEST 📝 NOTE ICON

15



Thread the cables through the gap towards the inside of the stadium



Legend

→ DISCONNECT → CONNECT / RECONNECT ↺ TURN / FLIP → DIRECTIONAL ↻ TWIST / BRAID ✨ POWER ON TEST 📝 NOTE ICON

16

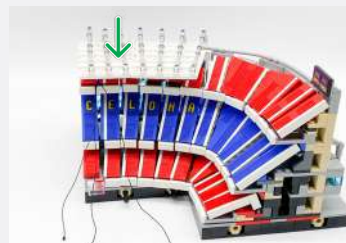
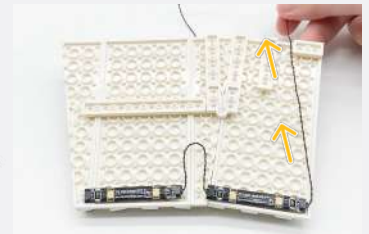
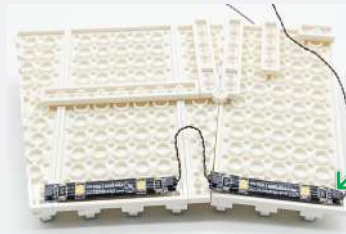
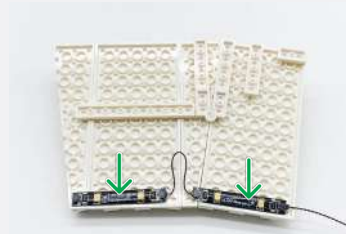
2x White Strip Light



5cm Connecting Cable



30cm Connecting Cable



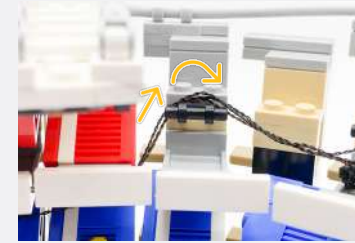
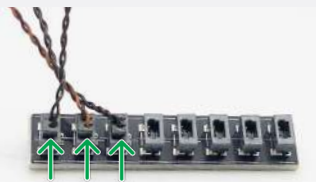
Legend

→ DISCONNECT → CONNECT / RECONNECT ↻ TURN / FLIP → DIRECTIONAL ↻ TWIST / BRAID ✨ POWER ON TEST 📝 NOTE ICON

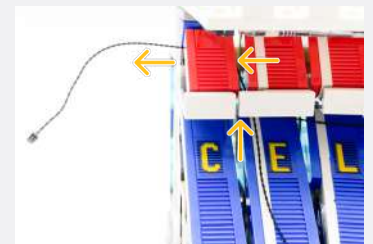
17



8-Port Expansion Board

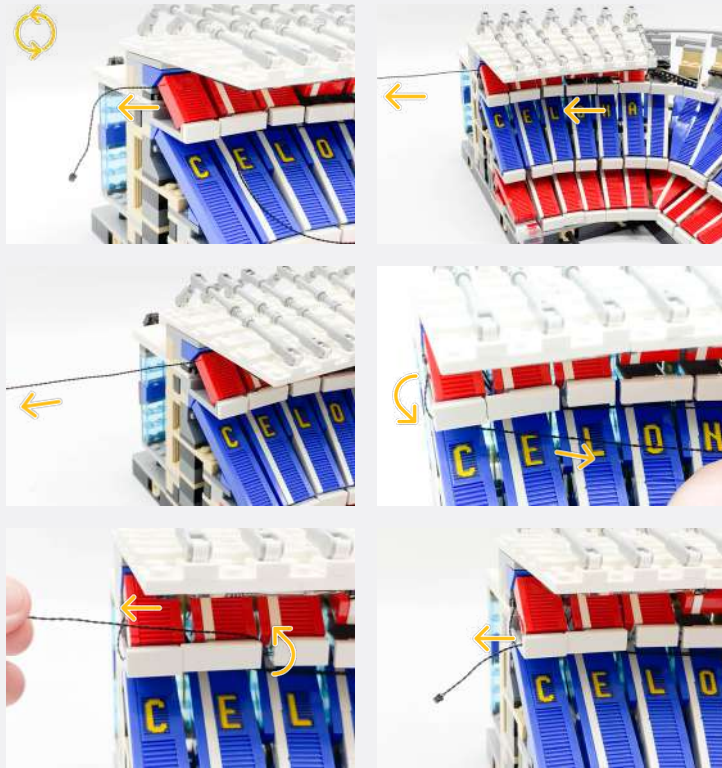


30cm Connecting Cable

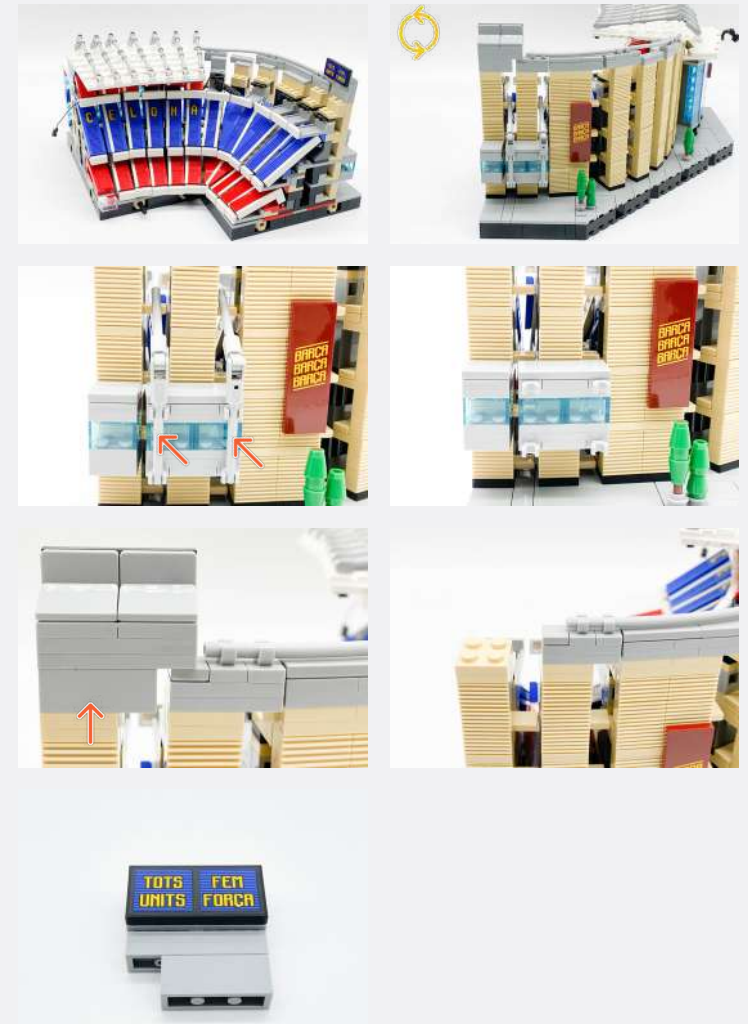


Legend

- DISCONNECT
- CONNECT / RECONNECT
- ↻ TURN / FLIP
- DIRECTIONAL
- ↻ TWIST / BRAID
- ✳ POWER ON TEST
- 📝 NOTE ICON

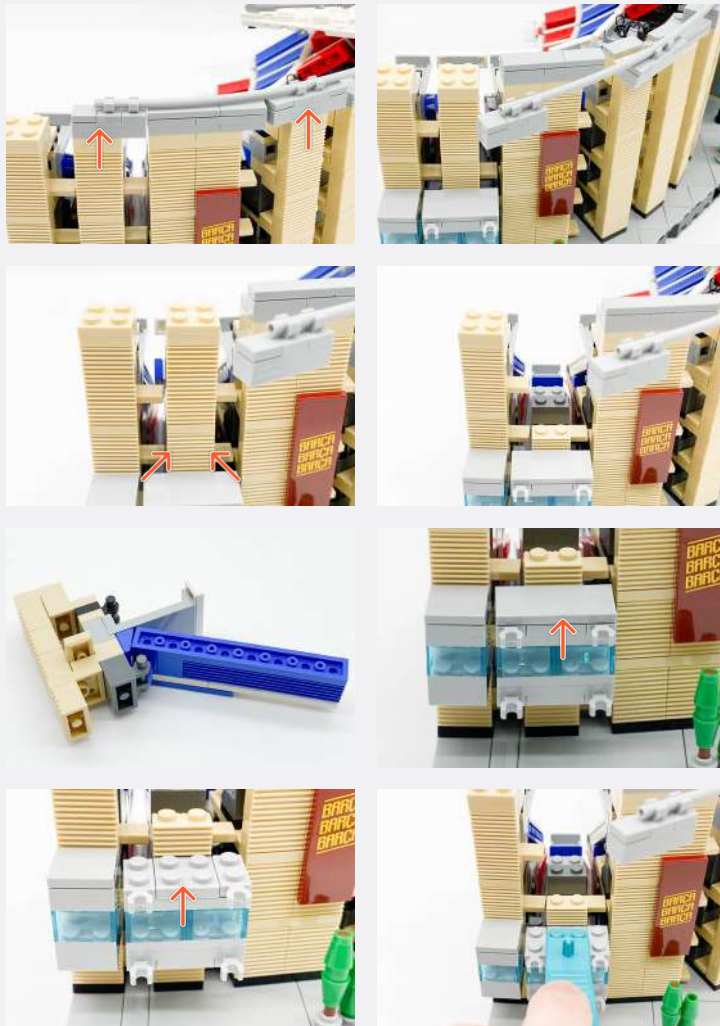


18

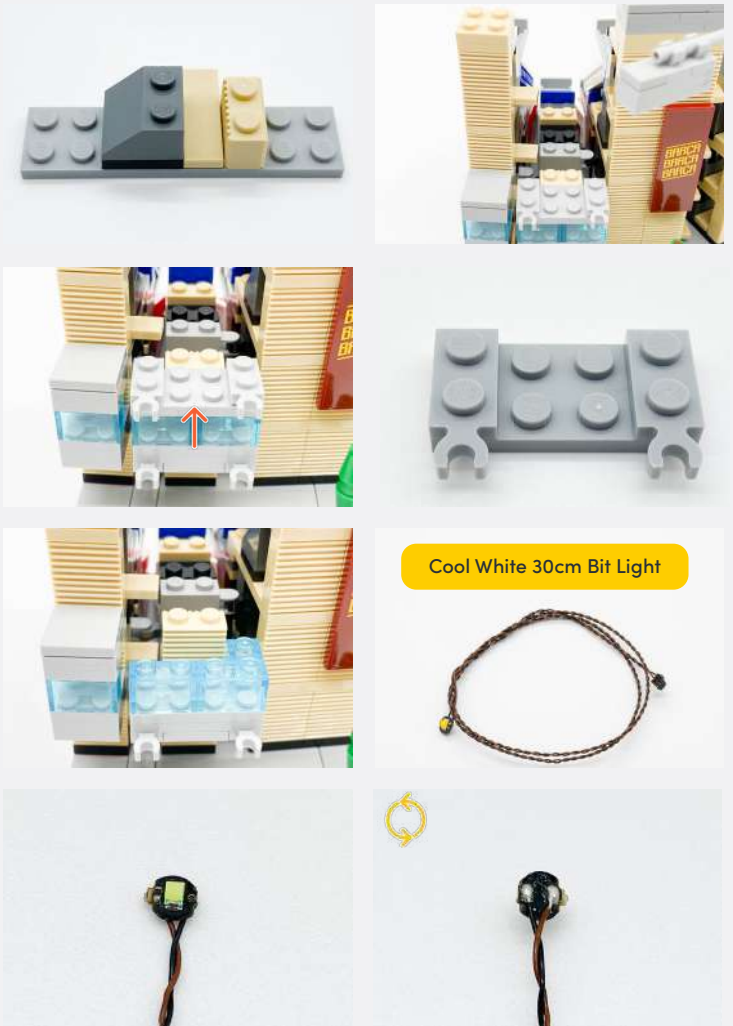


Legend

- DISCONNECT
- CONNECT / RECONNECT
- ↻ TURN / FLIP
- DIRECTIONAL
- ↻↻ TWIST / BRAID
- ✱ POWER ON TEST
- 📝 NOTE ICON

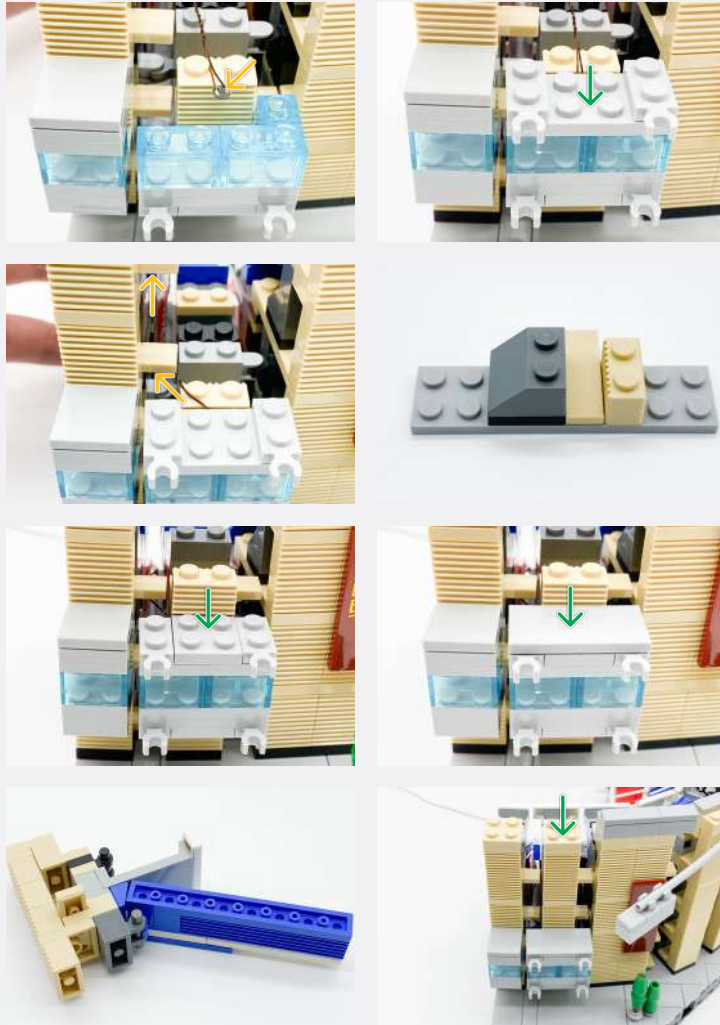


19

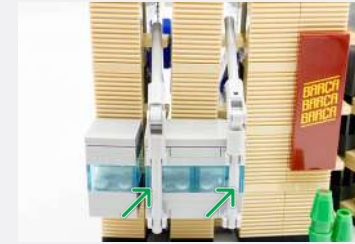


Legend

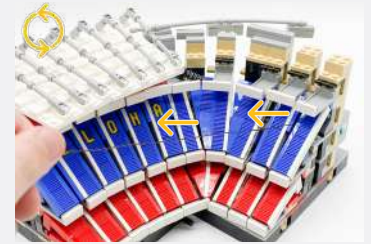
 DISCONNECT
  CONNECT / RECONNECT
  TURN / FLIP
  DIRECTIONAL
  TWIST / BRAID
  POWER ON TEST
  NOTE ICON



20



2x Black 1x1 Plate Modified
Plate Rounded w/ Handle



Black Arm Skeleton, Bent w
Clips (Horizontal Grips)



Black Round Plate 1x1
w/ Open Stud



Cool White 30cm Bit Light



Legend

→ DISCONNECT

→ CONNECT /
RECONNECT

↻ TURN / FLIP

→ DIRECTIONAL

↻ TWIST / BRAID

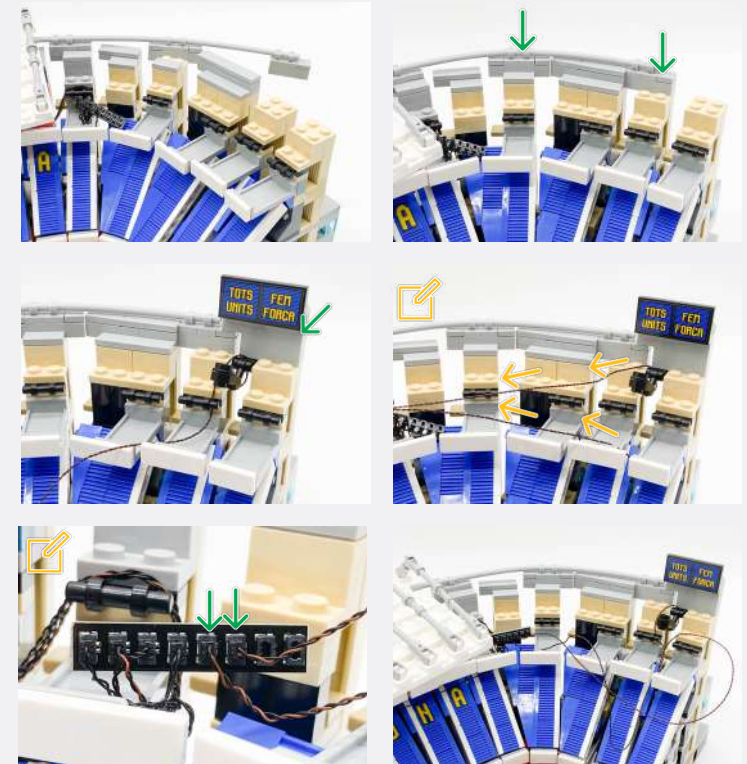
✱ POWER ON TEST

📝 NOTE ICON



✂ Connect both Cool White 30cm Bit Lights from Step 19 & 20 to the Expansion Board

21



2x Black 1x1 Plate Modified Plate Rounded w/ Handle

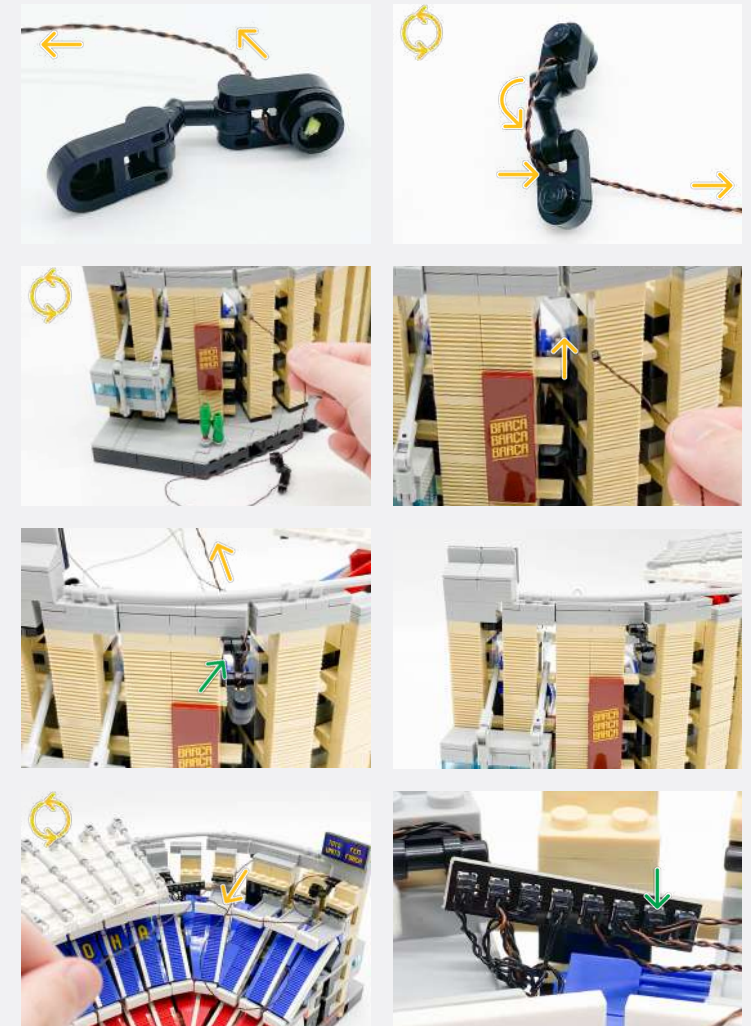
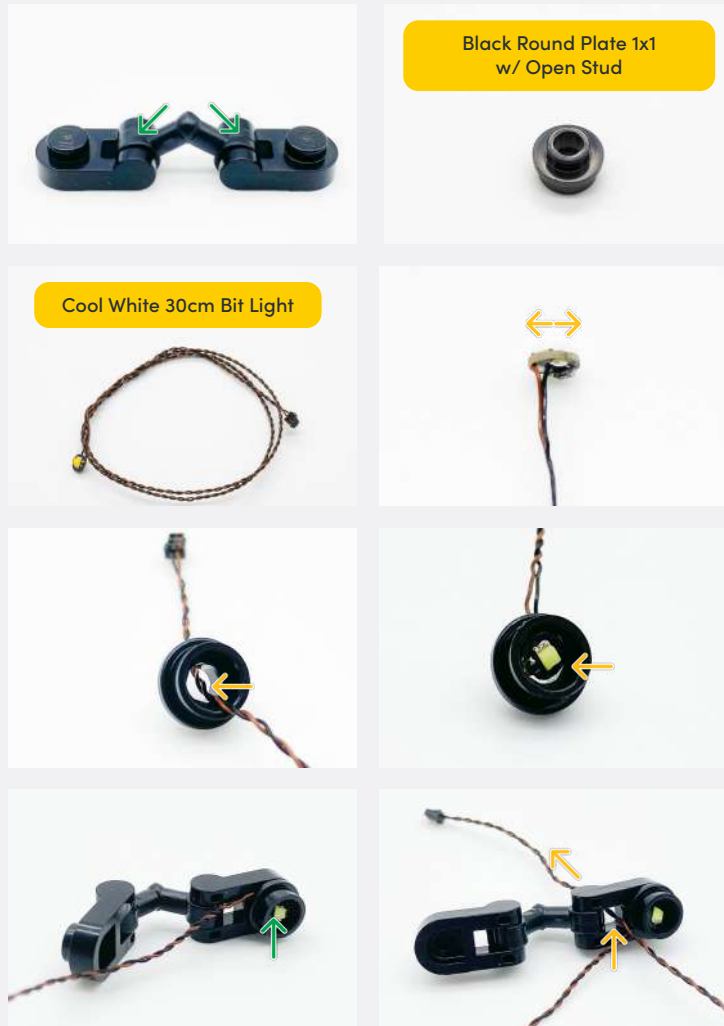


Black Arm Skeleton, Bent w Clips (Horizontal Grips)



Legend

→ DISCONNECT → CONNECT / RECONNECT ↺ TURN / FLIP → DIRECTIONAL ↻ TWIST / BRAID ✨ POWER ON TEST 📝 NOTE ICON

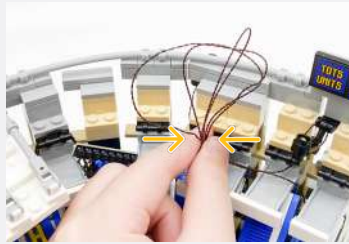


Legend

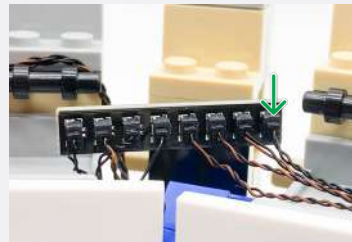
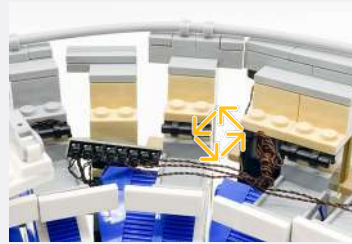
 DISCONNECT
  CONNECT / RECONNECT
  TURN / FLIP
  DIRECTIONAL
  TWIST / BRAID
  POWER ON TEST
  NOTE ICON

📌 If you experience any issues with the lights not working and suspect an issue with a component, please try a different port on the expansion board to verify where the fault lies (with the light or expansion board). To correct any issues with expansion board ports, please view the section addressing expansion board issues in our troubleshooting section.

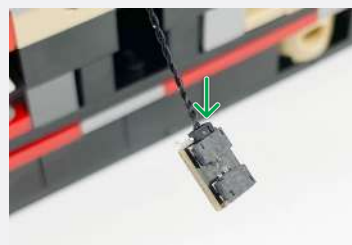
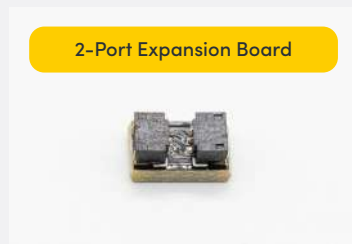
22



15cm Connecting Cable

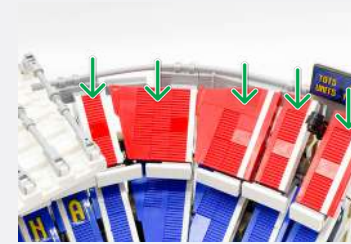


2-Port Expansion Board



23

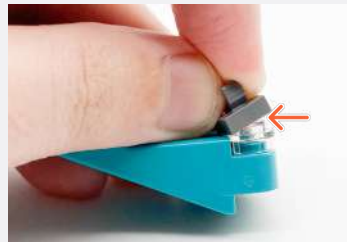
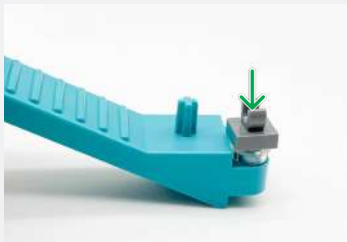
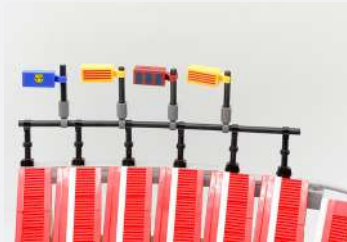
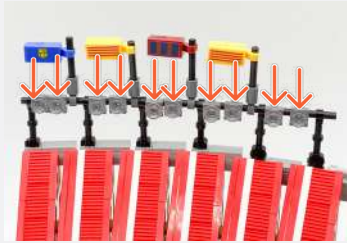
📌 Temporarily connect the USB Power Bank to test the lights



Legend

→ DISCONNECT → CONNECT / RECONNECT ↺ TURN / FLIP → DIRECTIONAL ↻ TWIST / BRAID ✨ POWER ON TEST 📌 NOTE ICON

24



10x

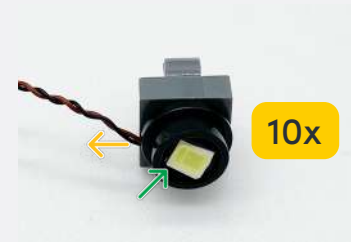


25

Black Round Plate 1x1
w/ Open Stud



Cool White 30cm Large Bit Light



10x



Legend

→ DISCONNECT

→ CONNECT / RECONNECT

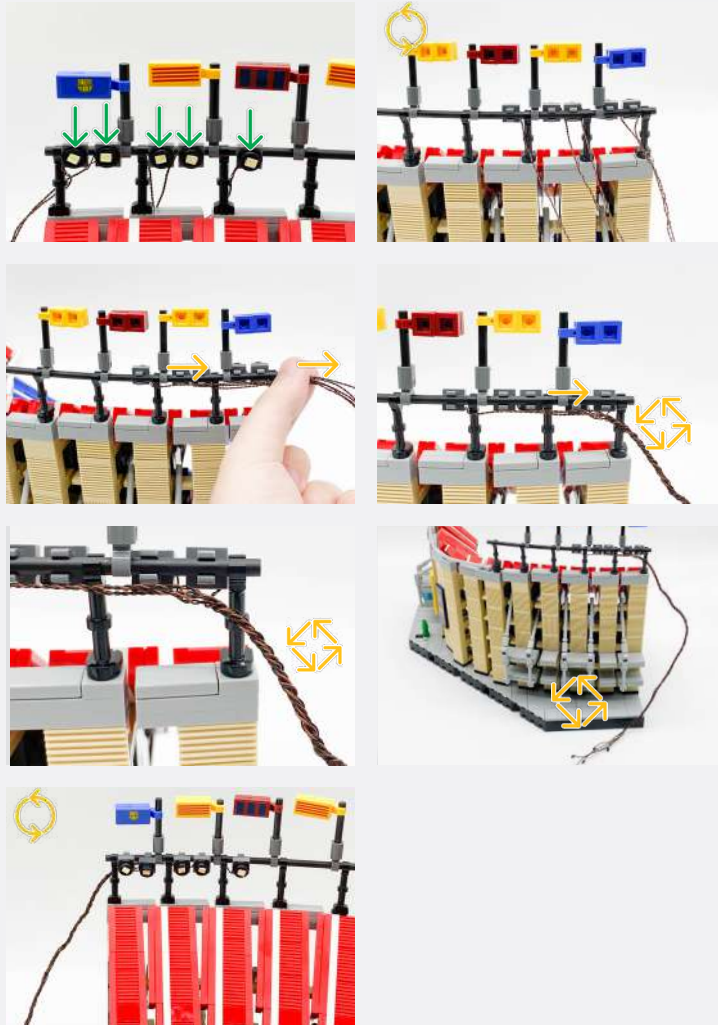
↻ TURN / FLIP

→ DIRECTIONAL

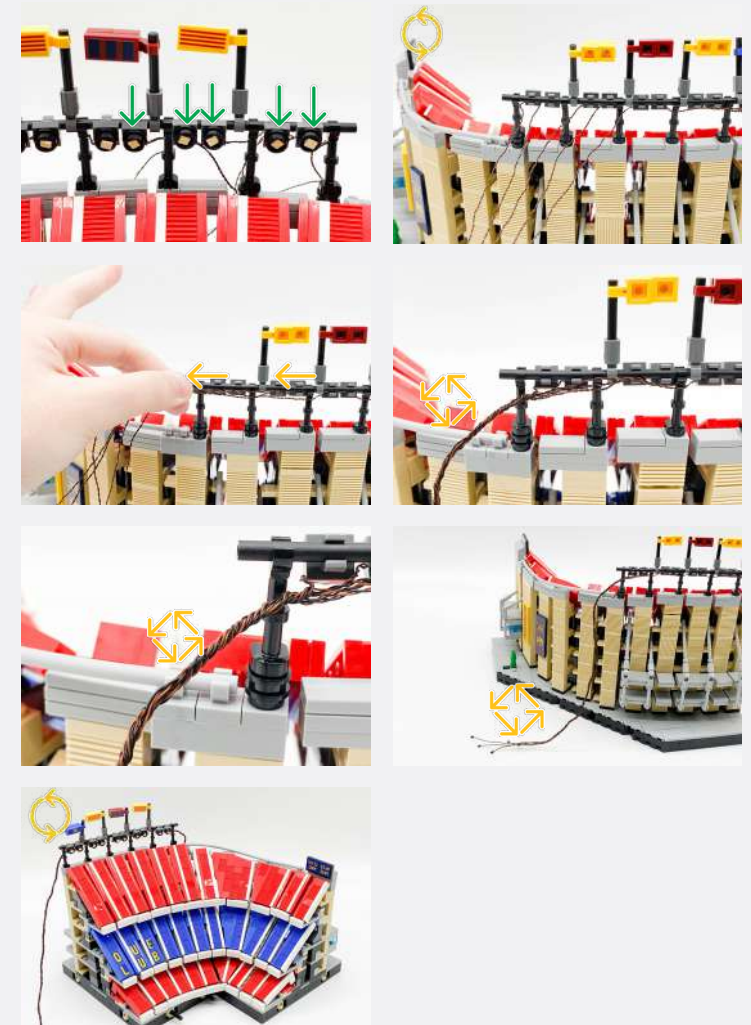
↻ TWIST / BRAID

✱ POWER ON TEST

📝 NOTE ICON



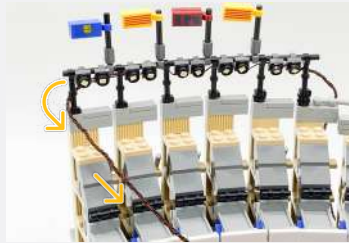
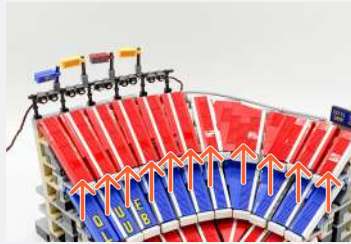
26



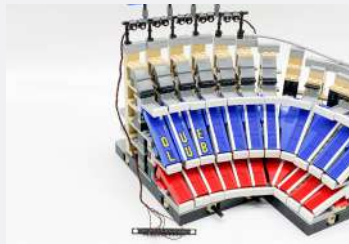
Legend

- DISCONNECT
- CONNECT / RECONNECT
- ↻ TURN / FLIP
- DIRECTIONAL
- ↻ TWIST / BRAID
- ✱ POWER ON TEST
- 📝 NOTE ICON

27



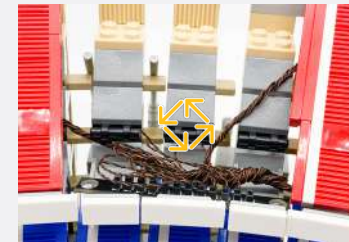
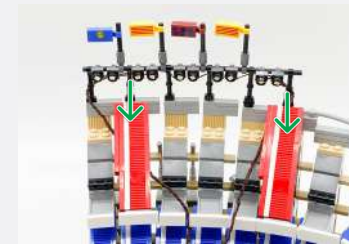
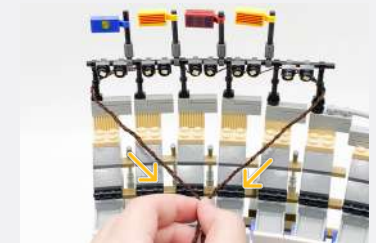
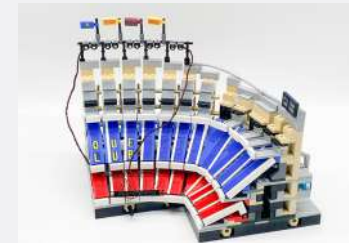
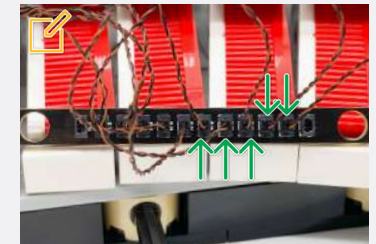
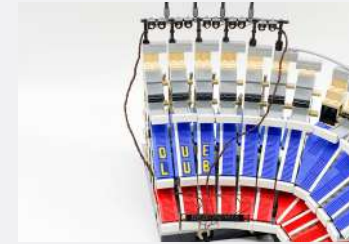
12-Port Expansion Board



Leave the first port free



Leave the last port free

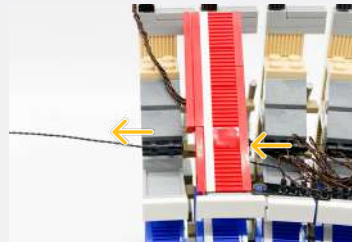
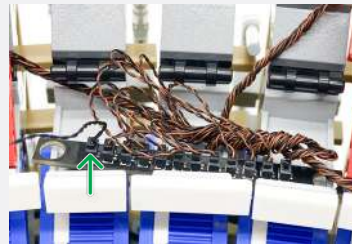


Legend

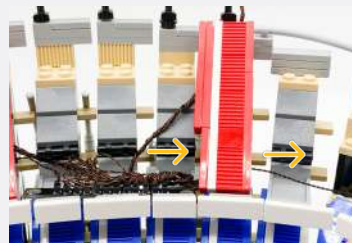
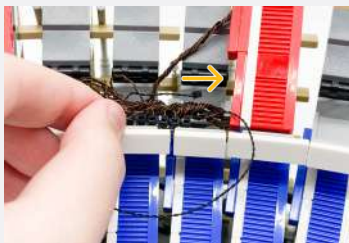
DISCONNECT
 CONNECT / RECONNECT
 TURN / FLIP
 DIRECTIONAL
 TWIST / BRAID
 POWER ON TEST
 NOTE ICON

28

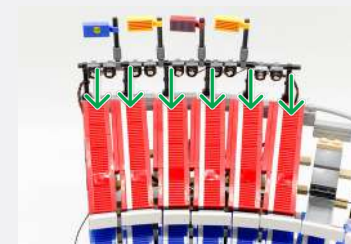
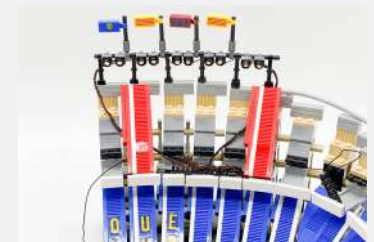
15cm Connecting Cable



15cm Connecting Cable



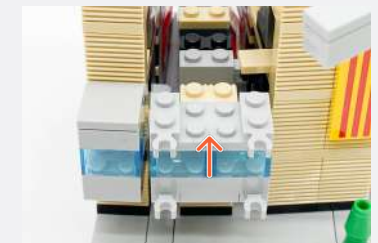
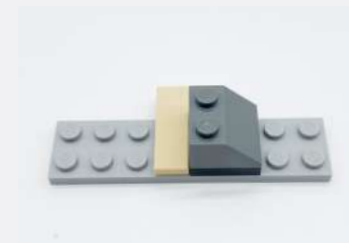
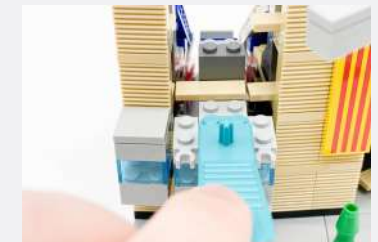
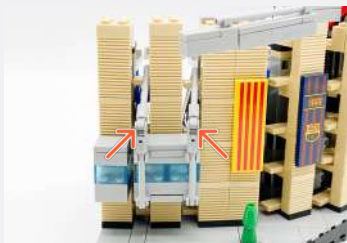
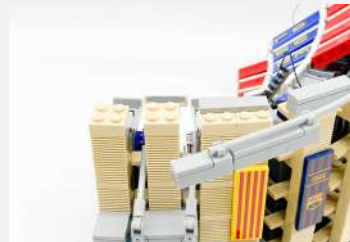
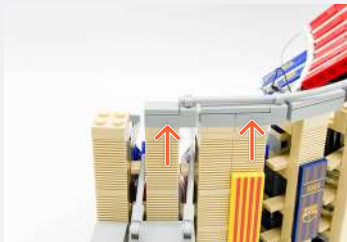
6-Port Expansion Board



Legend

 DISCONNECT
  CONNECT / RECONNECT
  TURN / FLIP
  DIRECTIONAL
  TWIST / BRAID
  POWER ON TEST
  NOTE ICON

29

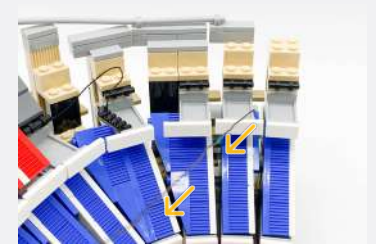
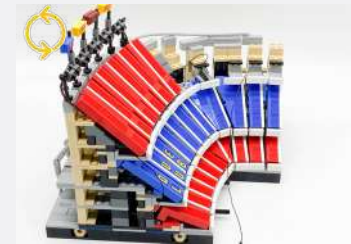
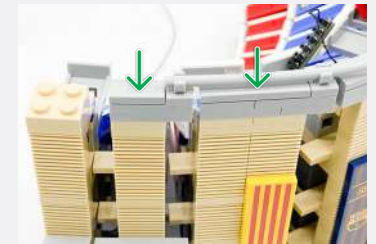
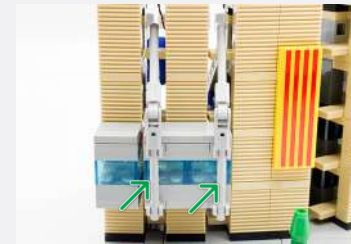
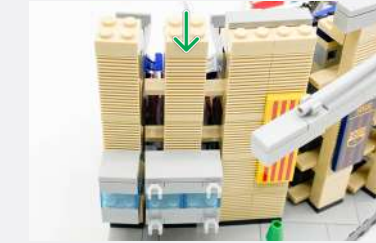
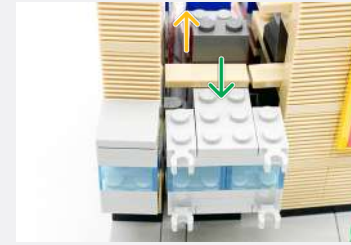
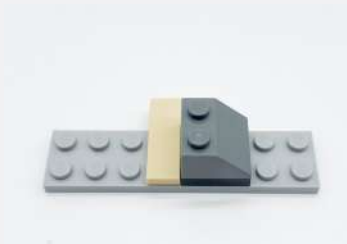
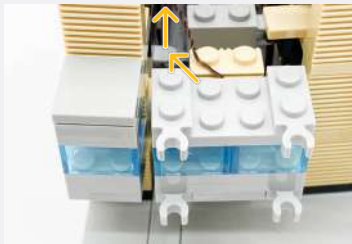
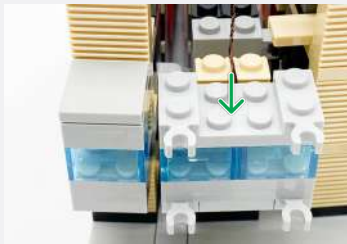


Legend

 DISCONNECT
  CONNECT / RECONNECT
  TURN / FLIP
  DIRECTIONAL
  TWIST / BRAID
  POWER ON TEST
  NOTE ICON



Cool White 30cm Bit Light



Legend

→ DISCONNECT

→ CONNECT / RECONNECT



→ DIRECTIONAL

 TWIST / BRAID POWER ON TEST

 NOTE ICON

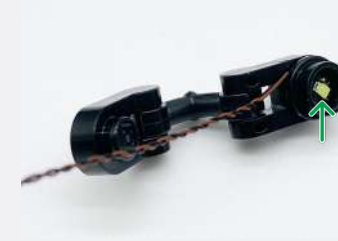
30

2x Black 1x1 Plate Modified
Plate Rounded w/ Handle

Black Arm Skeleton, Bent w
Clips (Horizontal Grips)

Black Round Plate 1x1
w/ Open Stud


Cool White 30cm Bit Light



Connect both
Cool White 30cm
Bit Lights from
Step 29 & 30 to the
Expansion Board



Legend

→ DISCONNECT → CONNECT / RECONNECT ↺ TURN / FLIP → DIRECTIONAL ↻ TWIST / BRAID ✨ POWER ON TEST 📝 NOTE ICON

31

2x Black 1x1 Plate Modified
Plate Rounded w/ Handle



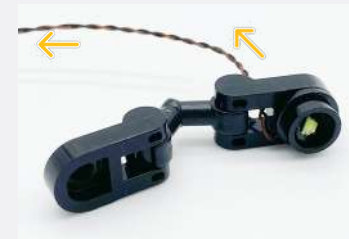
Black Arm Skeleton, Bent w
Clips (Horizontal Grips)



Black Round Plate 1x1
w/ Open Stud



Cool White 30cm Bit Light



Legend

→ DISCONNECT

→ CONNECT / RECONNECT

↻ TURN / FLIP

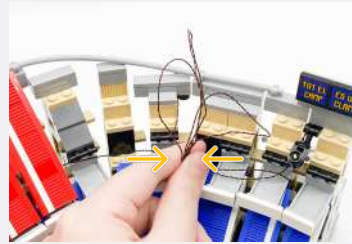
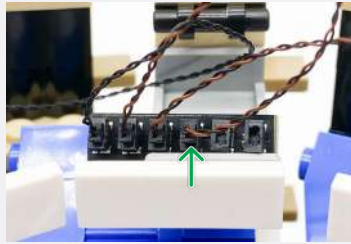
→ DIRECTIONAL

↻ TWIST / BRAID

⚡ POWER ON TEST

📝 NOTE ICON

32



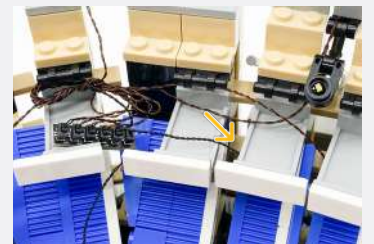
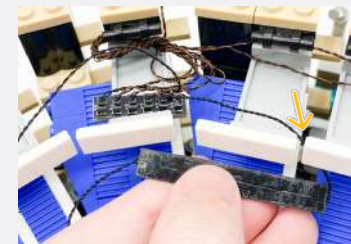
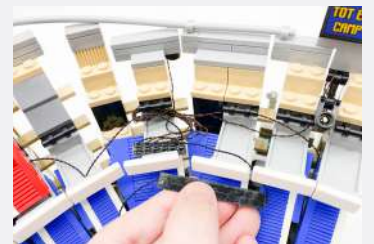
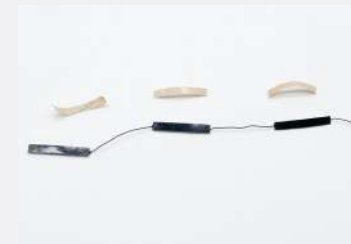
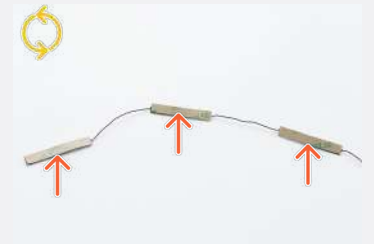
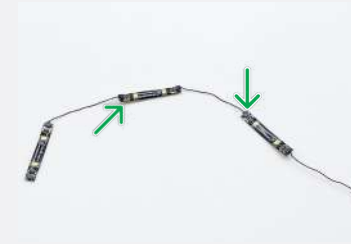
5cm Connecting Cable



White Strip Light



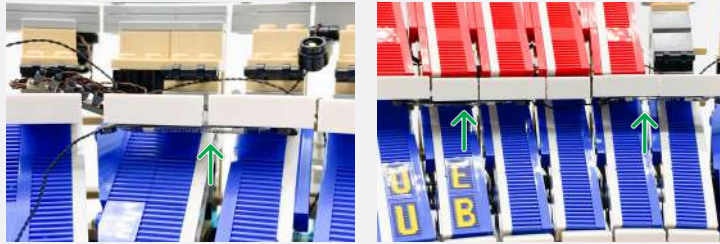
3x



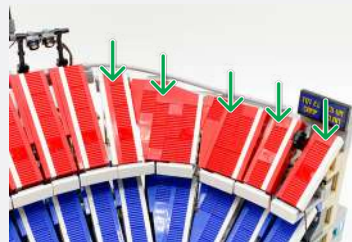
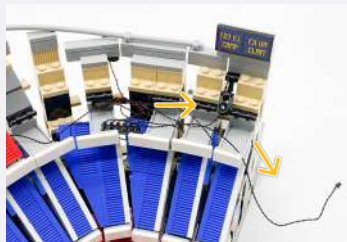
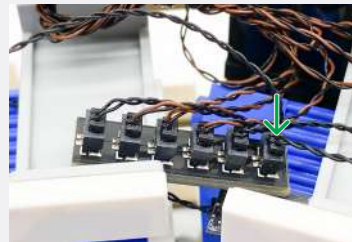
Legend

DISCONNECT
 CONNECT / RECONNECT
 TURN / FLIP
 DIRECTIONAL
 TWIST / BRAID
 POWER ON TEST
 NOTE ICON

✎ If you experience any issues with the lights not working and suspect an issue with a component, please try a different port on the expansion board to verify where the fault lies (with the light or expansion board). To correct any issues with expansion board ports, please view the section addressing expansion board issues in our troubleshooting section.



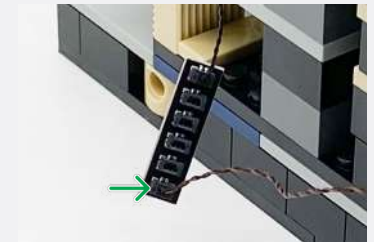
15cm Connecting Cable



6-Port Expansion Board



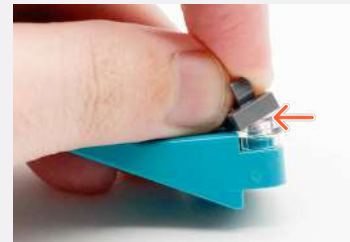
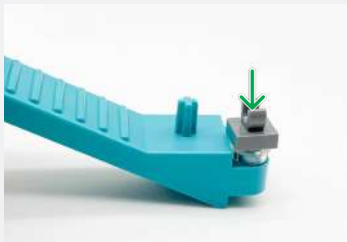
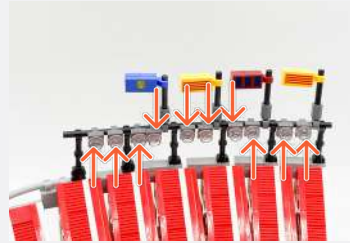
✎ Connect the 6-Port Expansion Board to the 15cm Connecting Cable on the left side



Legend

→ DISCONNECT → CONNECT / RECONNECT ↻ TURN / FLIP → DIRECTIONAL ↻ TWIST / BRAID ✨ POWER ON TEST ✎ NOTE ICON

34



10x

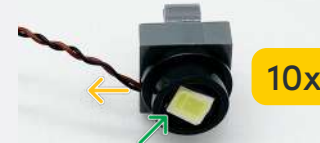


35

Black Round Plate 1x1
w/ Open Stud



Cool White 30cm Large Bit Light



10x



Legend

→ DISCONNECT

→ CONNECT / RECONNECT

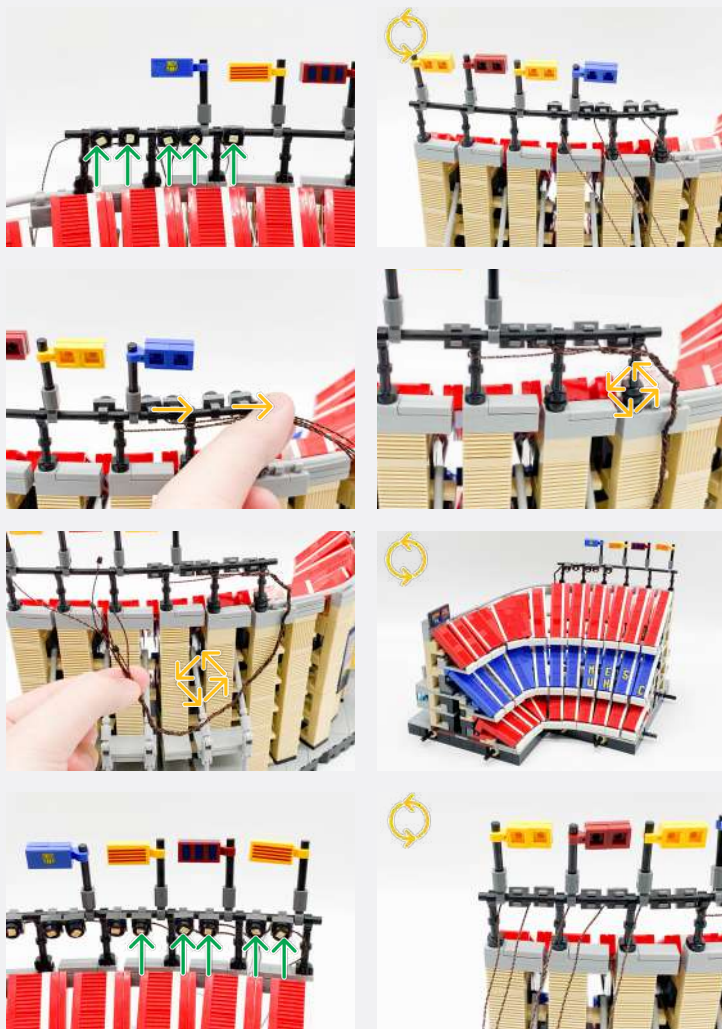
↻ TURN / FLIP

→ DIRECTIONAL

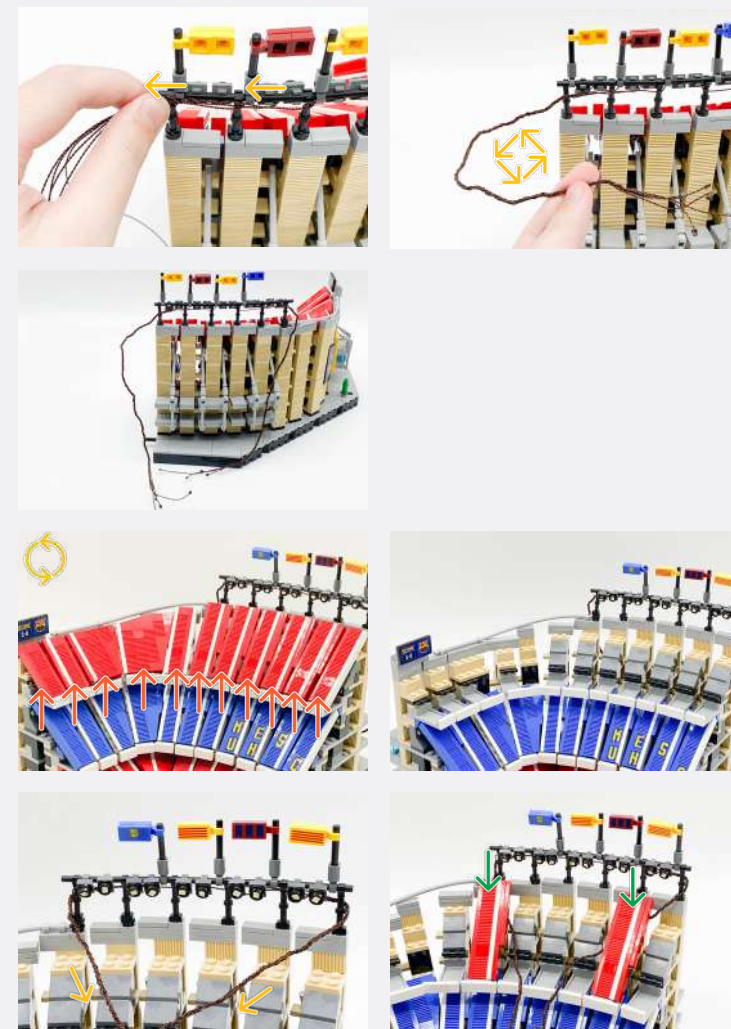
↻ TWIST / BRAID

✱ POWER ON TEST

📝 NOTE ICON



36

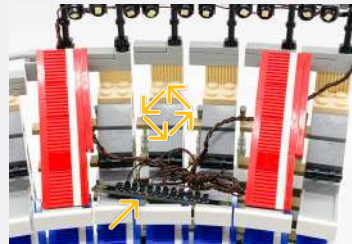
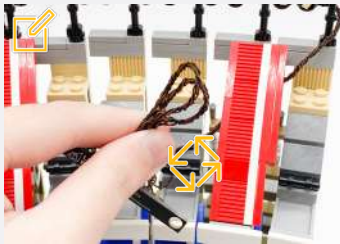
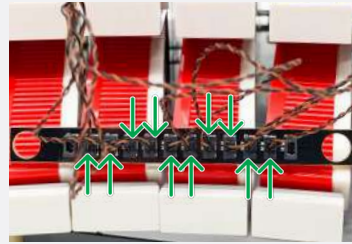


Legend

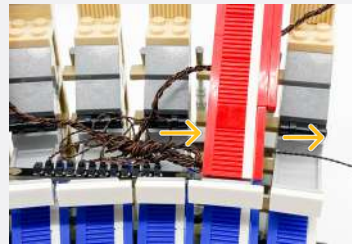
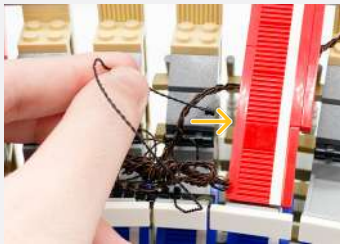
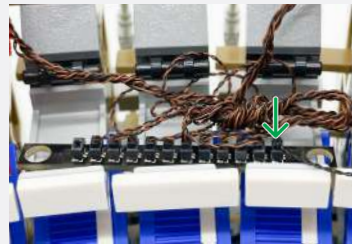
- DISCONNECT
- CONNECT / RECONNECT
- ↻ TURN / FLIP
- DIRECTIONAL
- ↻ TWIST / BRAID
- ✱ POWER ON TEST
- 📝 NOTE ICON

Leave the first and last port free

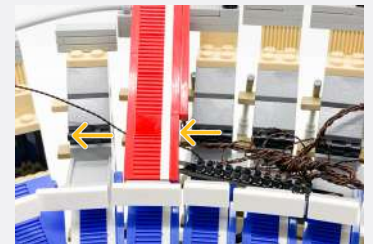
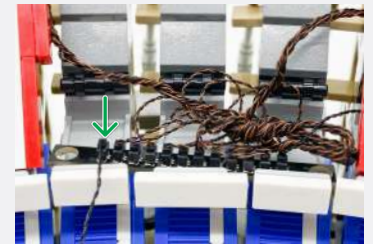
12-Port Expansion Board



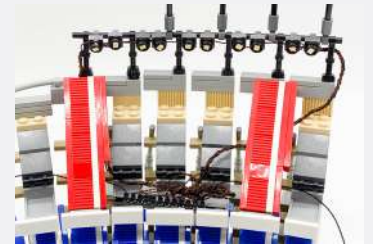
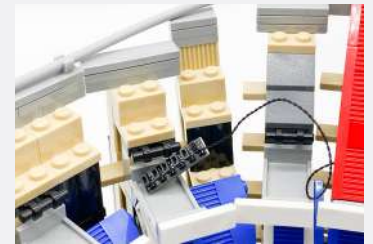
15cm Connecting Cable



15cm Connecting Cable



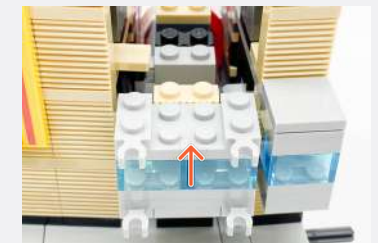
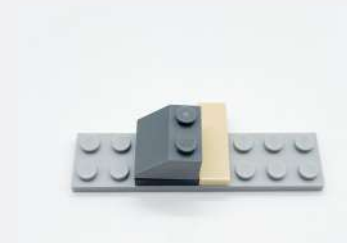
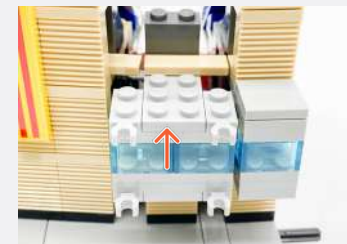
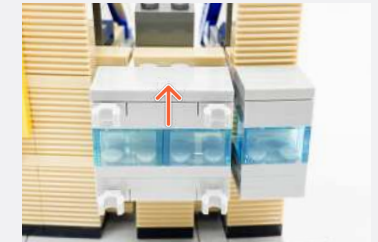
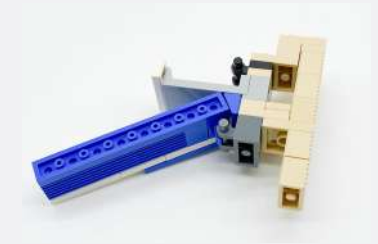
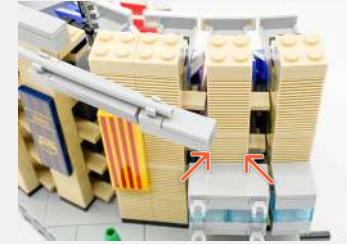
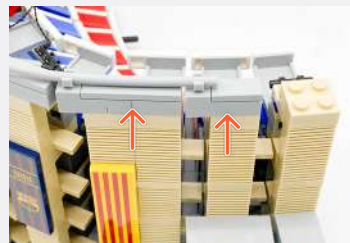
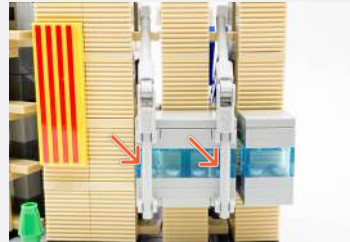
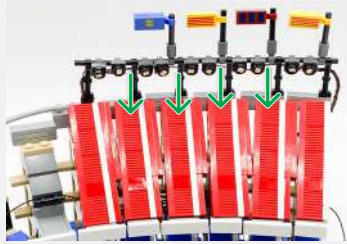
6-Port Expansion Board



Legend

 DISCONNECT
  CONNECT / RECONNECT
  TURN / FLIP
  DIRECTIONAL
  TWIST / BRAID
  POWER ON TEST
  NOTE ICON

37

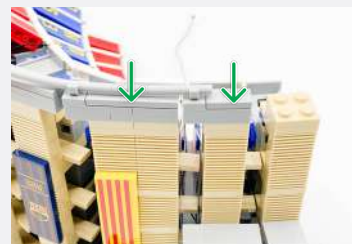
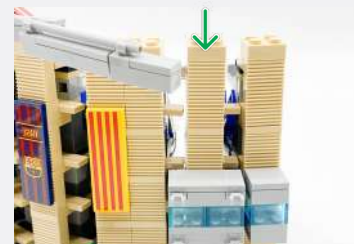
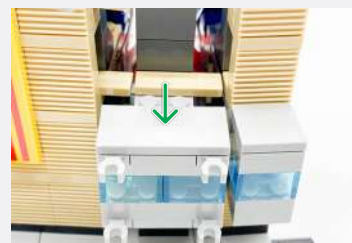
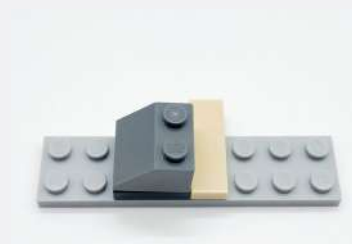
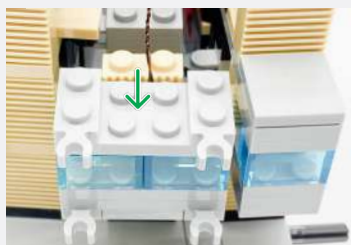
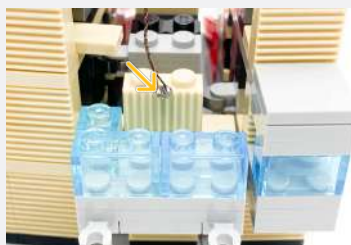


Legend

- DISCONNECT
- CONNECT / RECONNECT
- ↻ TURN / FLIP
- DIRECTIONAL
- ↻ TWIST / BRAID
- ✱ POWER ON TEST
- 📝 NOTE ICON



Cool White 30cm Bit Light



Legend

 DISCONNECT
  CONNECT / RECONNECT
  TURN / FLIP
  DIRECTIONAL
  TWIST / BRAID
  POWER ON TEST
  NOTE ICON

38

2x Black 1x1 Plate Modified
Plate Rounded w/ Handle



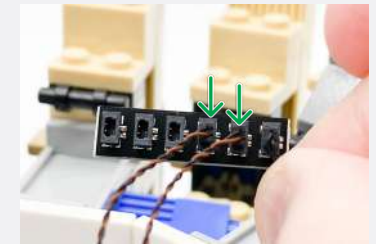
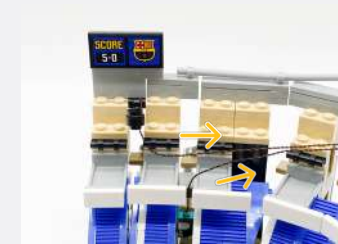
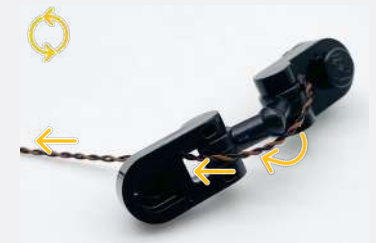
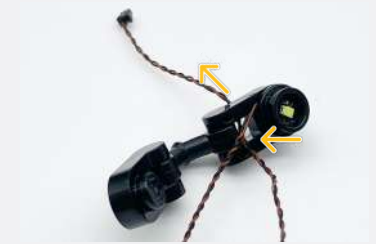
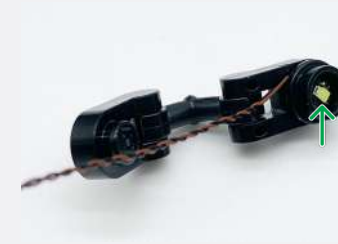
Black Arm Skeleton, Bent w
Clips (Horizontal Grips)



Black Round Plate 1x1
w/ Open Stud



Cool White 30cm Bit Light



Legend

→ DISCONNECT → CONNECT / RECONNECT

→ TURN / FLIP → DIRECTIONAL

→ TWIST / BRAID → POWER ON TEST

→ NOTE ICON

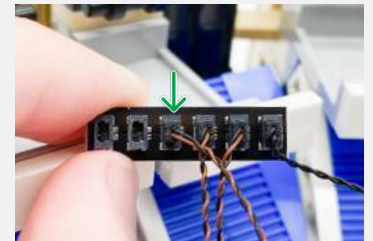
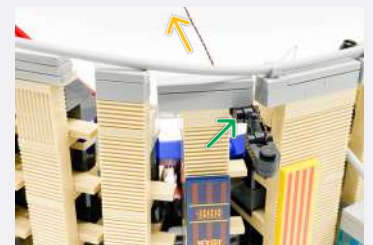
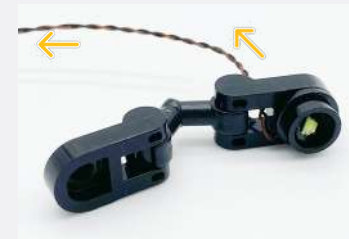
39

2x Black 1x1 Plate Modified
Plate Rounded w/ Handle

Black Arm Skeleton, Bent w
Clips (Horizontal Grips)

Black Round Plate 1x1
w/ Open Stud


Cool White 30cm Bit Light



Legend

→ DISCONNECT

→ CONNECT /
RECONNECT

↻ TURN / FLIP

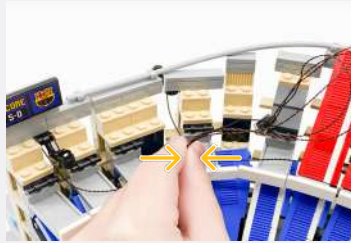
→ DIRECTIONAL

↻ TWIST / BRAID

⚡ POWER ON TEST

📝 NOTE ICON

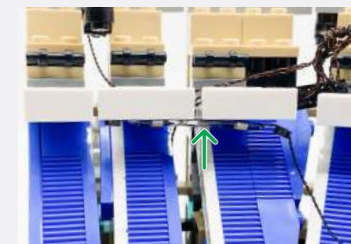
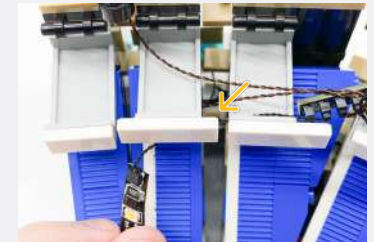
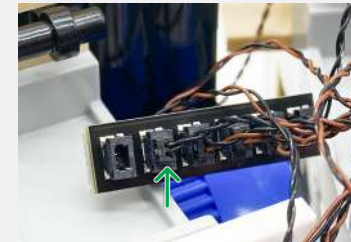
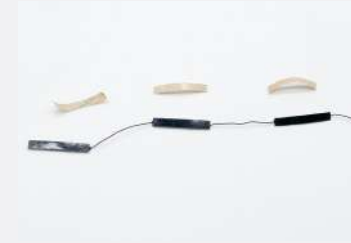
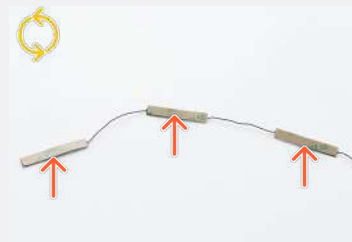
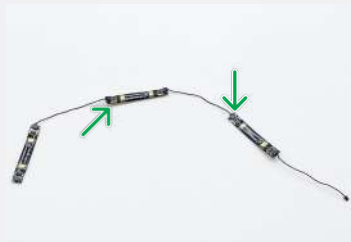
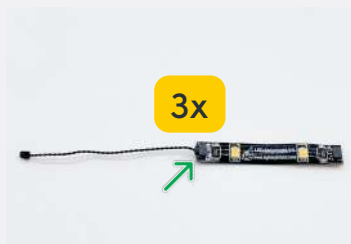
40



5cm Connecting Cable



White Strip Light

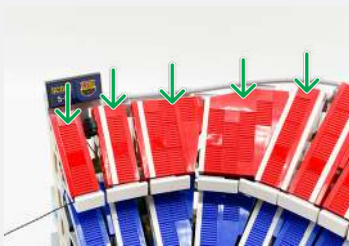
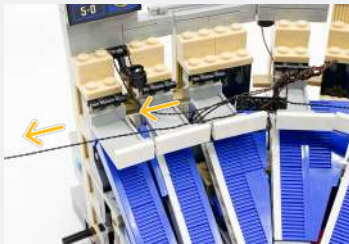


Legend

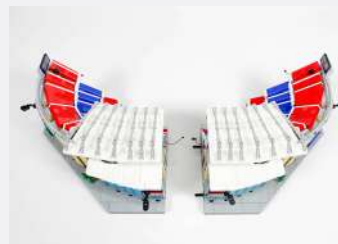
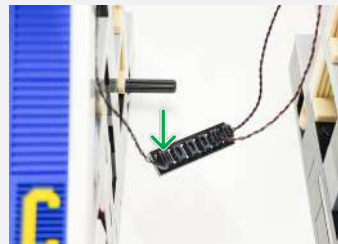
- DISCONNECT
- CONNECT / RECONNECT
- ↻ TURN / FLIP
- DIRECTIONAL
- ↻ TWIST / BRAID
- ⚡ POWER ON TEST
- 📝 NOTE ICON

41

15cm Connecting Cable



42



Legend

→ DISCONNECT

→ CONNECT / RECONNECT

↻ TURN / FLIP

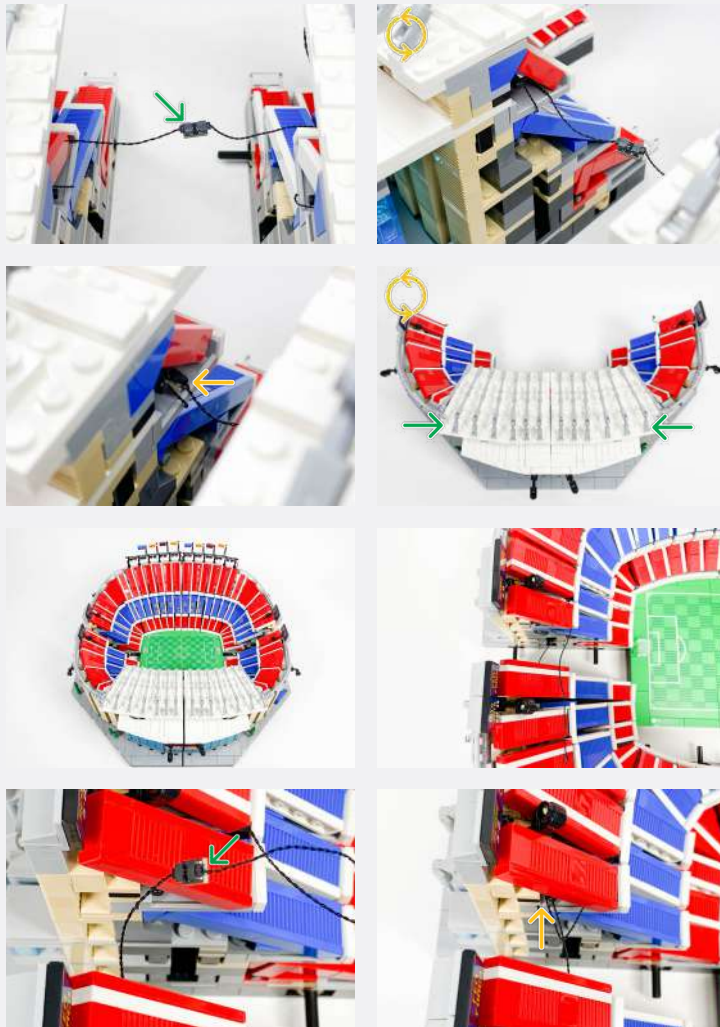
→ DIRECTIONAL

↻ TWIST / BRAID

✱ POWER ON TEST

📝 NOTE ICON

📌 If you experience any issues with the lights not working and suspect an issue with a component, please try a different port on the expansion board to verify where the fault lies (with the light or expansion board). To correct any issues with expansion board ports, please view the section addressing expansion board issues in our troubleshooting section.

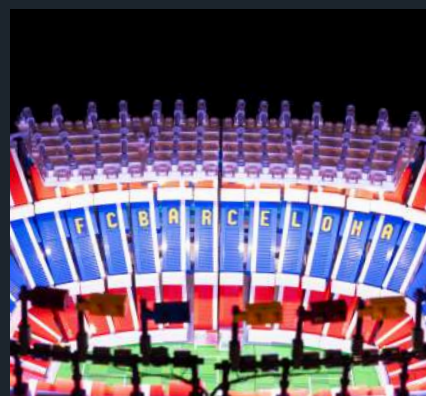
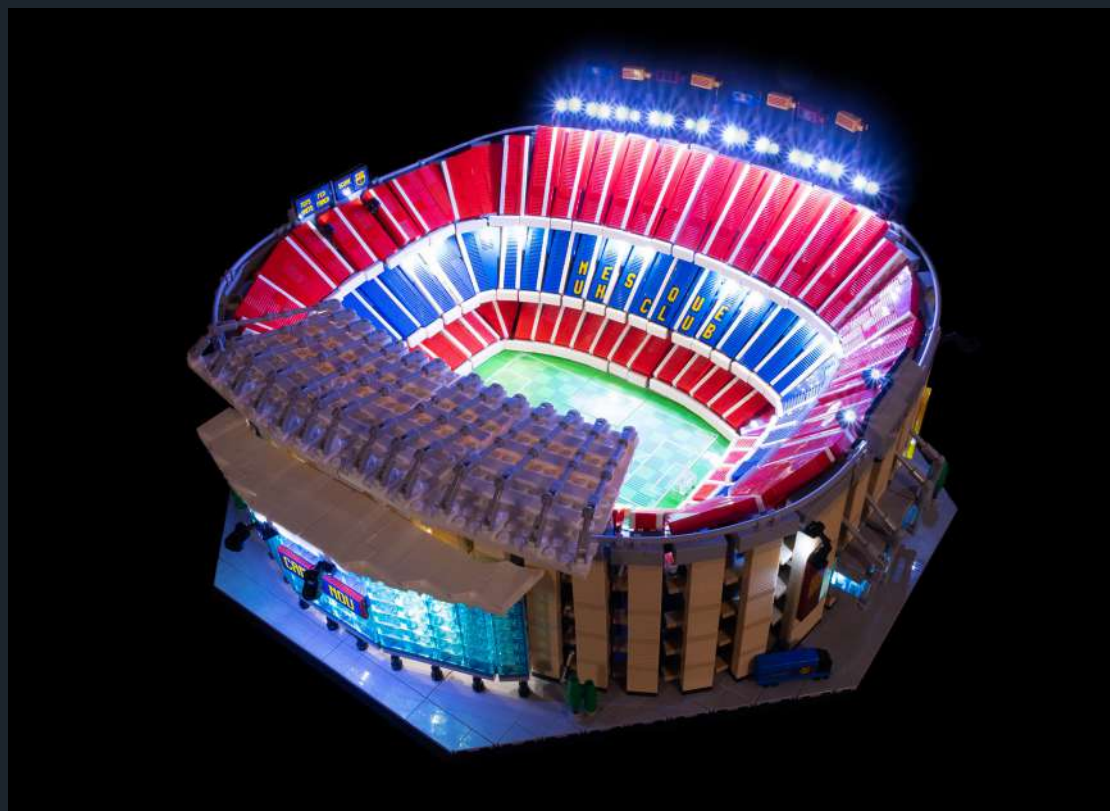


Legend

→ DISCONNECT → CONNECT / RECONNECT ↺ TURN / FLIP → DIRECTIONAL ↻ TWIST / BRAID ☀ POWER ON TEST 📌 NOTE ICON

FINAL PRODUCT

This finally completes installation of the Light My Bricks Camp Nou - FC Barcelona 10284 Light Kit.





TROUBLESHOOTING

Light My Bricks lighting kits contain individual components that are very small and can be easily damaged if not handled correctly.

To prevent unnecessary damage to components, we highly recommend that the User Guide section, **“Important things to note”** is read carefully. Follow the handling procedures in the User Guide to help prevent faults and damages to your Light My Bricks components.

If you are experiencing issues with your Light My Bricks set, watch our troubleshooting video [here](#) or read on for a list of common causes to help you troubleshoot.

Troubleshooting

Firstly, ensure that the batteries have power using a battery charge gauge.

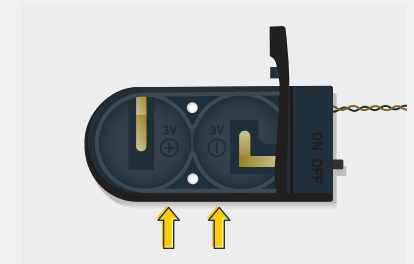
If the batteries have no power, replace the batteries.

If the batteries still have power, check to see if the batteries have been inserted correctly into the battery pack.

Check For CR2032 Batteries Using The Flat Battery Pack

Inside the battery pack is a symbol indicating which side the (round) CR2032 battery should be inserted. Check that the “+” side of the battery pack has the battery with the “+” symbol facing downwards.

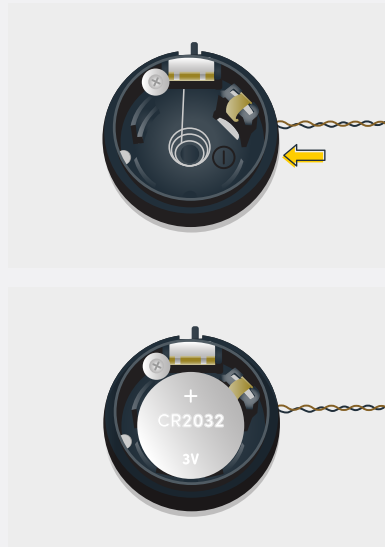
On the opposite side, the “-” side of the battery pack should have the battery flipped upside down, that is the “+” symbol facing upwards.



Troubleshooting

Check For Cr2032 Batteries Using The Round Battery Pack

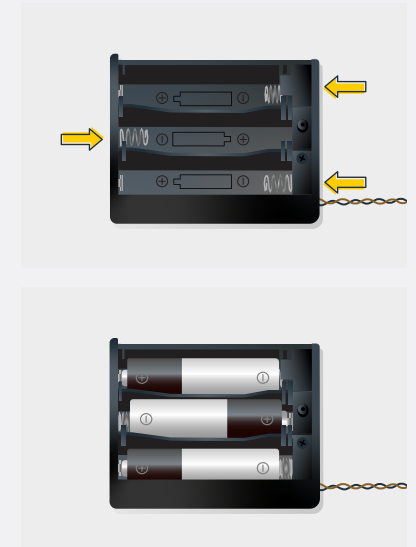
Inside the battery pack is a symbol indicating which side the (round) CR2032 battery should be inserted. In this case, for the stacked battery pack, ensure that BOTH batteries have the “+” symbol facing upwards.



Check for AA batteries using the AA battery pack

Inside the battery pack are symbols indicating which direction the AA battery should be inserted. The flat side of the battery should be paired with the spring side of the battery pack.

If the batteries have been installed correctly and your kit still isn't operating correctly, the next step is to check the wiring.



Troubleshooting

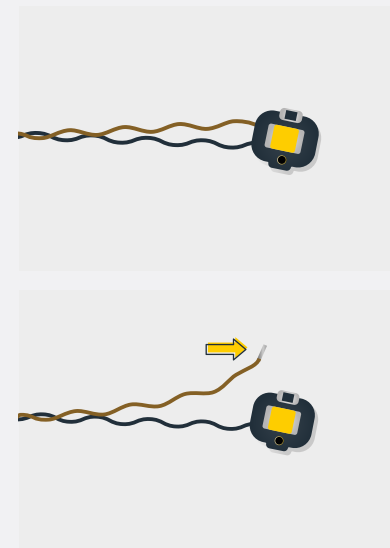
Check Your Wires

In order for Light My Bricks components to fit in between and underneath LEGO® bricks, the components need to be very small. Due to this nature, Light My Bricks components can be easily damaged when not handled correctly.

Be careful when removing unpacked components out of the packaging and ensure not to forcibly pull at the wires as this can damage the soldering that attach the wires to the LEDs.

If the wiring is detached from the LED itself, the light will not operate.

When connecting lights to your LEGO set, check that there are no pinched wires underneath or in between bricks and plates. When the wires are pinched and the exposed wires are touching each other, this can cause a crosswire and the lights to not function correctly.



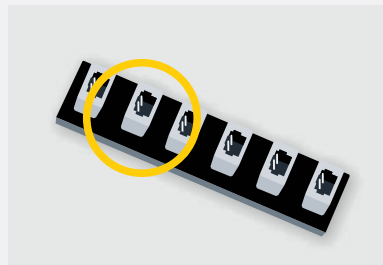
Troubleshooting

Check Your Expansion Board Ports/ Strip Light Ports / Effects Board Ports

It is important to note that connectors can only be inserted to the expansion board, strip light, or effects board ports in one direction.

Forcibly inserting connectors in the incorrect direction will result in damaging the pins inside each of the ports on your component board.

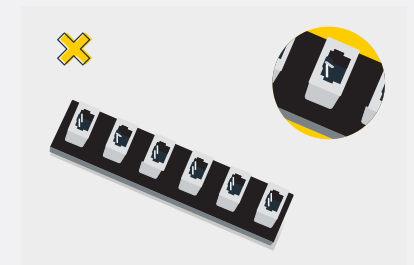
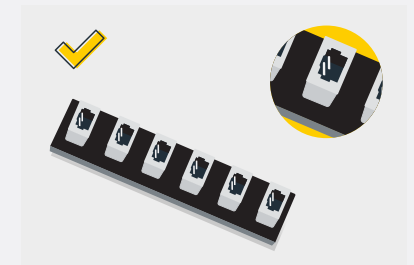
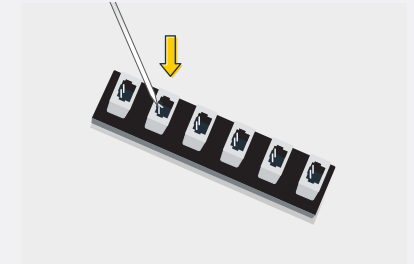
Not only will a light connected to the damaged port not work, but if the pins inside the port are bent to a point they are touching each other, this can result in all other lights in the system to stop working. This is a short circuit.



A short circuit can also result in overheating of the board, cable or batteries. If you suspect a short circuit, **DISCONNECT POWER IMMEDIATELY**. Batteries can fail, catch fire, or even explode if left connected to a short circuit for too long.

If you suspect you have a faulty component due to a bent pin, try the following steps:

If you look carefully inside each of the ports, each port contains 2 small pins that should be straight. You will be able to identify a faulty port if it has any bent pins.





CONTACT US

If you have an enquiry regarding the online shop, our products or a general enquiry please refer to our Frequently Asked Questions webpage here.

Alternatively, you can contact our Customer Services team by visiting our online support portal here.

support.lightmybricks.com

We thank you for purchasing this product and hope you enjoy!



lightmybricks.com